

**TECHNICAL MANUAL**  
**DIRECT AND GENERAL SUPPORT AND DEPOT**  
**MAINTENANCE**  
**REPAIR PARTS AND SPECIAL TOOLS LIST**  
**PUMP, CENTRIFUGAL: GASOLINE DRIVEN,**  
**BASE MOUNTED; 2-IN; 166-GPM, 25-FT HEAD**  
**(BARNES MODEL 10-MG)**  
**FSN 4320820-0700**

**This copy is a reprint which includes current  
pages from Changes 1.**

---

CHANGE

NO. 1

HEADQUARTERS  
DEPARTMENT OF THE ARMY  
WASHINGTON, D C, 3 JUNE 1992

Direct and General Support and Depot Maintenance Repair Parts  
and Special Tools List

**PUMP, CENTRIFUGAL: GASOLINE DRIVEN,  
BASE MOUNTED; 2-IN; 166GPM, 25FT HEAD  
(BARNES MODEL 10MG)  
FSN 4320-820-0700**

Approved for public release; Distribution is unlimited

Current as of 20 November 1989

TM 5-4320-220-35P, 10 October 1969, is changed as follows.

Page 14, Fig 6, Item 9 NSN should be changed from 2910-740-3354 to 4730-00-740-3354 Change Source Code from MO to XB. Delete manufacture from items, Nipple, Pipe (4730-249-9721) and Tube, Copper (4710-277-7581).

All changes, additions, or deletions of Federal Stock Numbers or Manufacturer's Code and part numbers within this change should be appropriately reflected in the index

By Order of the Secretary of the Army:

Official:

MILTON H HAMILTON  
Administrative Assistant to the  
Secretary of the Army

GORDON R. SULLIVAN  
General, United States Army  
Chief of Staff

DISTRIBUTION:

To be distributed in accordance with DA Form 12-25E, (qty rqr block no. 1362).

**1/(2 blank)**

**DIRECT AND GENERAL SUPPORT AND DEPOT MAINTENANCE REPAIR PARTS  
AND SPECIAL TOOLS LIST  
PUMP, CENTRIFUGAL: GASOLINE DRIVEN,  
BASE MOUNTED; 2-IN; 166-GPM 25-FT HEAD  
IBARNES MODEL 10-MGI  
FSN 4320-820-0700  
Current as of 13 December 1968**

		Paragraph	Page
SECTION	I.	INTRODUCTION	
		Scope.....	1      iii
		General .....	2      iii
		Explanation of columns .....	3      iii
		Special information.....	4      iv
		How to locate repair parts.....	5      iv
		Abbreviations .....	6      v
		Federal supply codes for manufacturers .....	7      v
		Recommendations for maintenance manual improvements.....	8      v
SECTION	II.	REPAIR PARTS FOR DS, GS, AND DEPOT MAINTENANCE	
Group	01.	Engine assembly	1
		0100 Engine assembly .....	2
		0101 Crankcase, block, cylinder head .....	5
		0102 Crankshaft.....	5
		0103 Flywheel assembly .....	5
		0104 Pistons, connecting rods.....	5
		0105 Valves, camshafts, and timing system.....	8
		0106 Engine lubrication system.....	9
		0107 Engine starting systems (other than electrical).....	11
		0108 Manifolds.....	11
	03.	Fuel System	
		0301 Carburetor, fuel injector .....	12
		0304 Air cleaner.....	12
		0306 Tanks, lines, fittings, headers .....	14
		0308 Engine speed governor and controls.....	15
		0309 Fuel filters .....	17
		0312 Accelerator, throttle or choke controls.....	18
	04.	Exhaust System	
		0401 Muffler and pipes.....	18
	05.	Cooling System	
		0502 Cowling, defectors, air ducts, shrouds, etc.....	18
	06.	Electrical System (engine and vehicular, etc)	
		0605 Ignition components .....	19
	15.	Frame, Towing Attachments, and Drawbars	
		1501 Frame assembly.....	24
	22.	Body Chassis or Hull, and Accessory Items	
		2210 Data plates and instruction holders .....	24

This manual together with TM 54320-220-20P, 10 October 1969 supersedes TM 54320-22025P, 10 June 1965

		Page
Group	55. Pumps	
	5500 Pump assembly.....	25
	5501 Shafts, rotors, impellers.....	26
	5505 Suction and/or discharge assembly .....	27
	5508 Lubricators .....	28
	76. Fire Fighting Equipment Components	
	7633 Portable fire fighting equipment.....	28
	95. General Use Standardized Parts	
	9501 Hardware supplies and bulk material.....	28
	99. Parts Peculiar .....	
	9901 Multi-listed parts.....	29
SECTION	III. SPECIAL TOOLS, TEST AND SUPPORT EQUIPMENT FOR DS, GS, AND DEPOT MAINTENANCE-NOT APPLICABLE	
SECTION	IV. FEDERAL STOCK NUMBER AND REFERENCE NUMBER INDEX.....	43

**SECTION I.**

**INTRODUCTION**

**1. Scope**

This manual lists repair parts required for the performance of direct support, general support, and depot maintenance of the pump.

**2. General**

a. The repair parts list is arranged as follows:

(1) Individual parts and major assemblies are listed alphabetically by item name within the numbered functional groups.

(2) Assembly components and subassemblies are indented and listed alphabetically by item name under major assemblies.

b. This Repair Parts and Special Tools List Is divided into the following sections:

(1) Repair Parts-Section II. A list of repair parts authorized for the performance of maintenance at the direct support, general support, and depot level.

(2) Special Tools, Test and Support Equipment Section III. A list of special tools, test and support equipment authorized for the performance of maintenance at the direct support, general support, and depot level. Not applicable.

(3) Federal Stock Number and Reference Number Index: Section IV. A list of Federal stock numbers followed by reference numbers in ascending alpha-numeric sequence cross-referenced to index number.

**3. Explanation of Columns**

The following provides an explanation of columns in the tabular lists in sections II and III:

a. Source, Maintenance, and Recoverability Codes (SMR), Column (1):

(1) Source Code, indicates the selection status and source for the listed item. Source codes used are:

Code	Explanation
P	Applied to repair parts which are stocked in or applied from DSA/GSA or Army supply system. and authorized for use at indicated maintenance categories

M Applied to repair parts which are not procured or stocked but are to be manufactured at indicated maintenance categories.

A Applied to assemblies which are not procured or stocked as such but made up of two or more units, each of which carry individual stock numbers and descriptions and are procured and stocked and can be assembled by units at indicated maintenance categories.

X Applied to parts and assemblies which are not procured or socked, the mortality of which is normally below that of the applicable end item, and the failure of which should result in retirement of the end item from the supply system.

X1 Applied to repair parts which are not procured or stocked, the retirement for which will be supplied by use of the next higher assembly or components

X2 Applied to Sir parts which are not stocked. The indicated maintenance category requirement such repair parts will attempt to obtain them through cannibalization; if not obtainable though cannibalization, such repair parts will be requisitioned with supporting justification through normal supply channels.

G Applied to major assemblies that are pr cared with PEMA (Procurement Equipment Missile Army) funds for initial issue only to be used as exchange assemblies at DSU and GSU maintenance level. These assemblies will not be stocked above DSU and GSU level or returned to depot supply level.

Note. Source code is not shown on common hardware items known to be readily available in Army supply channels ad through local procurement.

(2) Maintenance Code, indicates the lowest category of maintenance authorized to install the listed item. The maintenance level codes are:

Code	Explanation
O	Organational maintenance
F	Direct support maintenance
H	General support maintenance
D	Depot maintenance

(3) Recoverability Code, indicates whether unserviceable items should be returned for recovery or salvage. Items not coded are expendable. Recoverability codes are:

Code	Explanation
R	Applied to repair parts and assemblies which are economically repairable at DSU and GSU activities and normally are furnished by supply on an exchange basis.
T	Applied to high dollar value recoverable repair parts which are subject to special handling and are issued on an exchange basis. Such repair parts normally repaired or overhauled at depot maintenance activities.
U	Applied to repair parts specifically selected for salvage by reclamation units because of precious metal content, critical materials, high dollar value reusable casings or castings.

(4) This column also lists, below the SMR code, an index number for each item in ascending numerical sequence, which is used to locate items in the publication when the Federal stock number and/or reference number is known.

b. Federal Stock Number, Column (2). This column indicates the Federal stock number for the item.

c. Description, Column (3). This column indicates the Federal item name and any additional description of the item required. A part number or other reference number is followed by the applicable five-digit Federal supply code for manufacturers in parentheses. Material required for manufacture or fabrication is identified.

d. Unit of Issue, Column (4). This column indicates the unit used as basis for issue, e.g., ea, pr, ft, yd, etc.

e. Quantity Incorporated in Unit Pack, Column (5). This column indicates the actual quantity contained in the unit pack.

f. Quantity Incorporated in Unit, Column (6). This column indicates the quantity of the item used in the functional group.

g. Thirty-Day DS/GS Maintenance Allowances, Columns (7) and (8).

(1) The allowance columns are divided into three subcolumns. Indicated in each subcolumn is the quantity of items authorized for the number of equipments supported. Items authorized for use as required but not for initial stockage are identified with an asterisk in the allowance column.

(2) The quantitative allowances for DS/GS levels of maintenance will represent initial stockage for a 30-day period for the number of equipments supported.

(3) Determination of the total quantity of parts required for maintenance of more than 100 of these equipments can be accomplished by converting the equipment quantity to a decimal factor by placing a decimal point before the next to last digit of the number to indicate hundredths, and multiplying the decimal factor by the parts quantity authorized in the 51-100 allowance column. Example, authorized allowance for 51-100 equipments is 40; for 150 equipments multiply 40 by 1.50 or 60 parts required.

h. One-Year Allowances Per 100 Equipment/Contingency Planning Purposes, Column (9). This column indicates the quantity required for distribution and contingency planning purposes. The range of items indicates total quantities of all authorized items required to provide for adequate support of 100 equipments for one year.

i. Depot Maintenance Allowance Per 100 Equipments, Column (10). This column indicates the quantity authorized for depot maintenance of 100 equipments. Items authorized for use but not for initial stockage are identified with an asterisk in the allowance column.

j. Illustration, Column (11).

(1) Figure number, column (11) (a). Indicates the figure number of the illustration in which the item is shown.

(2) Item number, column (11) (b). Indicates the callout number used to reference the item in the illustration.

#### 4. Special Information

a. Repair parts mortality has been based on 1,000 hours of operation per year.

b. Parts which require manufacture or assembly at a category higher than that authorized for installation will indicate in the source column the higher category.

c. The following publications pertain to the pump and its components:

TM 5B-4320-220-15	Operator, organizational, field and depot maintenance manual
LO 5-4320-220-15	Lubrication order

#### 5. How to Locate Repair Parts

a. When Federal stock number or reference number is unknown:

(1) First. Using the table of contents, determine the functional group within which the repair part belongs.

**7. Federal Supply Codes for Manufacturers**

Code	Manufacturer
00000.....	Ordnance Corps
00165.....	Chilton Metal Products
05748.....	Barnes Mfg. Co.
19728.....	Prestolite Co. The
60038.....	Timken Roller Bearing Co.
66289.....	Wisconsin Motor Corp.
78940.....	Novo Industrial Corp. United Air Cleaner Div
79150.....	Victor Mfg and Gasket Co
79960.....	Box Corp The Fuel Devices Div
81336.....	Chief of Engineers
81352	Air Force-Navy Aeronautical Specifications Promulgated by Aeronautical Standards Group
82796A .....	Fairbanks Morse Inc Fairbanks Morse Power Systems Div
96906.....	Military Standards Promulgated by Standardization Div Directorate of Logistic Services DSA

**8. Recommendations for Maintenance Manual Improvements**

Reports of errors, omissions, and recommendations for improving this publication by the individual user is encouraged. Reports should be submitted on DA Form 2028 (Recommended Changes to DA Publications) and forwarded direct to Commanding General, US Army Mobility Equipment Command, ATTN: AMSME-MPP, 4300 Goodfellow Boulevard, St Louis, Mo. 63120.

(2) Second. Find the illustration covering the functional group to which the repair part belongs.

(3) Third. Identify the repair part on the illustration, and note the illustration figure and item number of the repair part.

(4) Fourth. Using the Repair Parts Listing, find the functional group to which the repair part belongs and locate the illustration figure and item number noted on the illustration.

b. When Federal stock number or reference number is known:

(1) First. Using the Index of Federal Stock Numbers and Reference Numbers, find the pertinent Federal stock number or reference number. This index is in ascending alphanumeric sequence cross-referenced to an index number.

(2) Second. Using the Repair Part Listing, find the index number referenced in the Index of Federal Stock Numbers and Reference Numbers.

**6. Abbreviations**

ea .....	each
ft .....	feet, foot
grp .....	group
id.....	inside diameter
in.....	inch (es)
lh .....	left hand
mtg .....	mounting (s)
No.....	number (s)
od .....	outside diameter
rh .....	right hand
sh.....	sheet (s)
thd .....	thread (ed)
w/,.....	with





(1) SMR CODE	(2) FEDERAL STOCK NUMBER	(3) DESCRIPTION  REFERENCE NUMBER & MFR. CODE USABLE ON CODE	(4) UNIT OF ISSUE	(5) QTY UNIT OF MEAS	(6) INC IN UNIT	(7) 30 DAY DS MAINT ALLOWANCE			(8) 30 DAY GS MAINT ALLOWANCE			(9) 1-YR ALW PER 100 EQUIP CNTGCY	(10) DEPOT MAINT ALW PER 100 EQUIP	ILLUSTRATION	
						(a)	(b)	(c)	(a)	(b)	(c)			(a)	(b)
						1-20	21-50	51-100	1-20	21-50	51-100			FIGURE NO.	ITEM NO/
0 00016 P O R 00017	5310-732-0558	NUT, PLAIN, HEX: engine mtg	EA		4	*	*	*	*	*	*	*		2	20
0 00018 00019	2805604-8225	POWER UNIT, GASOLINE: Wisconsin Model MAENILD, Specification No 189294 189294 (66289)	EA		1	*	2	2	*	2	2	15	15		
0 00020 F 00021 X2 FR 00022	5310-479-6859	WASER, LOCK: engine	EA		4	*	*	*	*	*	*	*	*	2	21
0 00020 F 00021 X2 FR 00022	5306-207-9156	0101 - CRANKCASE, BLOCK, CYLINDR HEAD BOLT, MACHINE: cylinder head mtg	EA		3	*	*	*	*	*	*	*	*	2	8
0 00023 X2 0 C0024 X1 00025 F F 0002 P P 00027	5306-207-6501	BOLT, MACHINE: main bearing plate	EA		4	*	*	*	*	*	*	*	*	1	1
0 00023 X2 0 C0024 X1 00025 F F 0002 P P 00027	5306-255-8504	CYLINDER AND CRANKCASE ASSEMBLY AA91A1S8 (66289) BOLT, MACHINE: tappet chamber cover	EA		1	SEE	GRP	0105						3	
0 00028 X1 00029 P F 00030	2805-360-8334	COVER, PLATE: tappet chamber SA68 (66289) CYLINDER AND CRANKCASE ASSEMBLY AA91A1 (66289)	EA	↑	1	SEE	GRP	0105						3	4
	2805-776-8151	INSERT, VALVE SEAT HG201D (66289)	EA		2	SEE	GRP	0105							
	5315-710-9252	PIN, HOLLOW: valve stem guide A043 (66789)	EA		2	SEE	GRP	0105'							
	5340-050-1591	PLUG, EXPANSION: camshaft	EA		2	*	*	*	*	*	*	*	*	8	15
	2805-095-8784	GASKET: tappet chamber cover QD612A (66289)	EA		1	SEE	GRP	0105							
	2805-277-2918	LOCK, VALVE SPRING RETAINER AH9 (66289)	EA		4	SEE	GRP	0105							

(1) SMR CODE	(2) FEDERAL STOCK NUMBER	(3) DESCRIPTION  REFERENCE NUMBER & MFR. CODE USABLE ON CODE	(4) UNIT OF ISSUE	(5) QTY UNIT OF MEAS	(6) INC IN UNIT	(7) 30 DAY DS MAINT ALLOWANCE			(8) 30 DAY GS MAINT ALLOWANCE			(9) 1-YR ALW PER 100 EQUIP CNTGCY	(10) DEPOT MAINT ALW PER 100 EQUIP	ILLUSTRATION		
						(a)	(b)	(c)	(a)	(b)	(c)			(a)	(b)	
						1-20	21-50	51-100	1-20	21-50	51-100			FIGURE NO.	ITEM NO/	
P F 00031	2805-301-2940	ROTOR, ENGINE POPPET VALVE AG31 (66289)	EA		2	SEE	GRP	0105								
X2 F 00032	2805-620-0156	SEAT, SPRING CENTERING: valve spring AG34B (66289)	EA		2	SEE	GRP	0105								
P F 00033	2805-664-7876	SPRING, HELICAL, COMPRESSION: valve AF54 (66289)	EA		2	SEE	GRP	0105								
P F 00034	2805-776-8153	VALVE, ENGINE: intake and exhaust AE75D (66289)	EA		2	SEE	GRP	0105								
0 00035	5310-205-9981	WASHER, FLAT: tappet chamber cover screw	EA		1	SEE	GRP	0105								
X1 00036	2805-546-3730	GASKET: bearing plate, flywheel end QD674 (66289) (Control of GASKET SET, Stock No. 2805-353-5908, See Group 0100)	EA		1									1	4	
X1 00037	2805-536-8805	GASKET: cylinder head QD48 (66289) (Component of GAST SET, Stock No. 2805-353-5908, See Group 0100)	EA		1									2	5	
X1 00038	2805-366-9739	GASKET: min bearing plate, take-off end(an required) QD487B (66289) (Component og GASKET SET, Stock No. 2805-353-5908, See Group 0100)	EA											1	27	
X1 00039	5330-292-1504	GASKET: min bearing plate, take-off end (an required) QD1487A (66289) (Component of GASKET SET, Stock No. 2805-353-5908, See Group 0100)	EA											1	28	
P 0 00040	2805-705-7796	HEAD, CYLINDER, WITH SPARK PLUG INSERT AB101- 5S1 66289)	EA		1	*	*	2	*	*	2	9	15	2	9	
0 00041	5310-584-8731	NUT, PLAIN, HEXAGON: cylinder head stud	EA		1	*	*	*	*	*	*	*	*	2	10	
X2 F 00042	2805-353-5854	PLATE ASSEMBLY, BEARING: take-off end BG241S1 (66289)	EA		1											

(1) SMR CODE	(2) FEDERAL STOCK NUMBER	(3) DESCRIPTION  REFERENCE NUMBER & MFR. CODE    USABLE ON CODE	(4) UNIT OF ISSUE	(5) QTY UNIT OF MEAS	(6) INC IN UNIT	(7) 30 DAY DS MAINT ALLOWANCE			(8) 30 DAY GS MAINT ALLOWANCE			(9) 1-YR ALW PER 100 EQUIP CNTG	(10) DEPOT MAINT ALW PER 100 EQUIP	ILLUSTRATION	
						(a)	(b)	(c)	(a)	(b)	(c)			(a)	(b)
						1-20	21-50	51-100	1-20	21-50	51-100			FIGURE NO.	ITEM NO/
P F 00043	3110-100-0516	CUP, TAPED ROLLER BEARING: crankshaft 14276                    (60038)	EA		1	SEE	GRP	0102							
P F 0004 X1 00045	2805-366-6141	GASKET:            crankshaft oil seal PH193                    (66289)	EA		1	SEE	GRP	0102							
P F 00046	2805-146-6694	PLATE, BEARING BG241                    (66289)	EA		1									1	26
P F 00047	2805-353-5855	RETAINER, CRAINSHAFT OIL SEAL SD39                    (66289)	EA		1	SEE	GRP	0102							
X2 F 00048	2805-366-6141	PLATE, BEARING: flywheel end BC242S1                (66289)	EA		1	SEE	GRP	0102						1	3
P F 00049	2805-146-6694	GASKET:            crankshaft oil seal PH193                    (66289)	EA		1	SEE	GRP	0102							
P F 00050	2805-146-6694	RETAINER, CRANKSHAFT OIL SEAL SD39                    (66289)	EA		2	SEE	GRP	0102							
0 00051	4730-366-6256	PLUG, PIPE:    timing inspection hole	EA		1	*	*	*	*	*	*	*	*	2	19
0 00052	5305-269-3213	SCREW, CAP, HEXAGON HEADS: cylinder head mtg	EA		2	*	*	*	*	*	*	*	*	2	7
F 00053	5305-269-3211	SCREW, CAP, HEXGON HEAD: main bearing plate	EA		4	*	*	*	*	*	*	*	*	1	24
0 00054	5307-275-3755	STUD, PLAIN: cylinder head mtg	EA		1	*	*	*	*	*	*	*	*	2	4
F 00055	5310-702-1797	WASER, FLAT: cylinder bead mtg	EA		6	*	*	*	*	*	*	*	*	2	11
F 00056	5310-407-9566	WASHER, LOCK: main bearing plate	EA		4	*	*	*	*	*	*	*	*	1	2
F 00056	5310-194-3021	WASHER, LOCK: main bearing plate	EA		4	*	*	*	*	*	*	*	*	1	25

(1) SMR CODE	(2) FEDERAL STOCK NUMBER	(3) DESCRIPTION  REFERENCE NUMBER & MFR. CODE USABLE ON CODE	(4) UNIT OF ISSUE	(5) QTY UNIT OF MEAS	(6) INC IN UNIT	(7) 30 DAY DS MAINT ALLOWANCE			(8) 30 DAY GS MAINT ALLOWANCE			(9) 1-YR ALW PER 100 EQUIP CNTG	(10) DEPOT MAINT ALW PER 100 EQUIP	ILLUSTRATION		
						(a)	(b)	(c)	(a)	(b)	(c)			(a)	(b)	
						1-20	21-50	51-100	1-20	21-50	51-100			FIGURE NO.	ITEM NO/	
00057		0102 - CRANKSHAFT														
P F 00058 A F 00059 P F 00060 P F 00061 P F 00062 P F 00063 X2 F 00064 P F 00065 X2 F 00066 P F 00067 00068 X2 0 00069 00070 P F 00071	2805-604-8226  3110-10D-3145  3110-100-0516  2805-249-9905  5315-616-5525  2805-366-6141  5315-616-5512  2805-146-6694  2805-366-6136  2805-654-3471	CRANKSHAFT, ENGINE C48D82S1 (66289) BEARNG, ROLLER, TAPERED: crankshaft ME84 (66289) CONE AND ROLLERS, TAPERED ROLLER BEARING 14130 (60038) CUP, TAPERED ROLLER BEARING: crankshaft 14276 (60038) CRANKSHAFT CA48D82 (66289) GEAR, HELICAL: crankshaft GA39 (66289) KEY, WOODRUFF: crankshaft gear PL55 (66289) GASKET: crankshaft oil seal PH193 (66289) KEY, WOODRUFF: flywheel PL87 (66289) RETAINER, CRANKSHAFT OIL SEAL SD39 (66289) 0103 - FLY ASSEMBLY FLYWHEEL, CRANKSHAFT NC143 (66289) 0104 - PISTONS, CONNECTING RODS PISTON, INTERNAL COMBUSTION ENGINE: standard DB200-3SP (66289) (Includes 2 each RING, Stock No. 5340-143 6669)	EA  EA  EA  EA  EA  EA  EA  EA  EA  EA  EA  EA  EA  EA	1  2  2  1  1  1  2  1  2  1  1  1	*  2  2  SEE  2  2  3  2  2  2  *	2  2  2  GRP  3  3  5  3  5  2  2	2  3  3  0105  5  5  5  2  2	*  2  2  2  3  5  2  2	2  3  3  2  5  5  2  2	15  30  30  60  200  60  200  15	15  60  60  200  200  200  30	1  1  1  1  2  1  2	8  7  11  10  5  35  6  27			

(1) SMR CODE	(2) FEDERAL STOCK NUMBER	(3) DESCRIPTION  REFERENCE NUMBER & MFR. CODE USABLE ON CODE	(4) UNIT OF ISSUE	(5) QTY UNIT OF MEAS	(6) INC IN UNIT	(7) 30 DAY DS MAINT ALLOWANCE			(8) 30 DAY GS MAINT ALLOWANCE			(9) 1-YR ALW PER 100 EQUIP CNTG	(10) DEPOT MAINT ALW PER 100 EQUIP	ILLUSTRATION	
						(a)	(b)	(c)	(a)	(b)	(c)			(a)	(b)
						1-20	21-50	51-100	1-20	21-50	51-100			FIGURE NO.	ITEM NO/
X1 00072	2805-366-6137	PIN, PISTON DE65 (66289)	EA		1									1	15
X1 00073	2805-654-3471	PISTON, INTERNAL COMBUSTION ENGINE DB209-3 (66289)	EA		1									1	16
X2 F 00074	2805-562-9957	PISTON, INTERNAL COMBUSTION ENGINE: 0.020 in oversize DB209-3SP20 (66289) (Includes 2 each RING, Stock No. 5340-143-6669)	EA		1										
X1 00075	2805-366-6137	PIN, PISTON DE65 (66289)	EA		1										
X1 00076		PISTON, INTERNAL COMBUSTION ENGINE DB209-3-020 (66289)	EA		1										
X2 F 00077	2805-562-9958	PISTON, INTERNAL COMBUSTION ENGINE: 0.040 in oversize DB209-3SP40 (66289) (Includes 2 each RING, Stock No. 5340-143-6669)	EA		1										
X1 00078	2805-366-6137	PIN, PISTON DE65 (66289)	EA		1										
X1 00079		PISTON, INTERNAL COMBUSTION ENGINE DB209-3-040 (66289)	EA		1										
P F 00080	5340-143-6669	RING, RETAINING: piston pin, 0.78025 in. id, 29/32 in. od PK52 (66289)	EA		2	2	2	3	2	2	3	30	60	1	20
P F 00081	2805-585-4125	RING SET, PISTON: standard DR6D (66289)	EA		1	2	4	8	2	4	8	90	100		
X1 00082		RING, COMPRESSION; top groove MS1393-1 (96906)	EA		1									1	19
X1 00083		RING, OIL: bottom groove MS13931-1 (96906)	EA		1									1	17
X1 00084	2805-52-5794	RING, SCRAPER: 2nd and 3rd groove MS13932-1 (96906)	EA		2									1	18
X2 F 00085	DR6DS20	RING SET, PISTON: 0.020 in. oversize (66289)	EA		1										

(1) SMR CODE	(2) FEDERAL STOCK NUMBER	(3) DESCRIPTION  REFERENCE NUMBER & MFR. CODE USABLE ON CODE	(4) UNIT OF ISSUE	(5) QTY UNIT OF MEAS	(6) INC IN UNIT	(7) 30 DAY DS MAINT ALLOWANCE			(8) 30 DAY GS MAINT ALLOWANCE			(9) 1-YR ALW PER 100 EQUIP CNTGCY	(10) DEPOT MAINT ALW PER 100 EQUIP	ILLUSTRATION		
						(a)	(b)	(c)	(a)	(b)	(c)			(a)	(b)	
						1-20	21-50	51-100	1-20	21-50	51-100			FIGURE NO.	ITEM NO/	
X1 00086		RING, COMPRESSION: top groove, 0.020 in oversize MS13933-2 (96906)	EA		1											
X1 00087		RING, OIL bottom groove, 0.020 in oversize MS13931-2 (96906)	EA		1											
X1 00088	2805-55560	RING, SCRAPER: 2nd and 3rd groove, 0.020 in oversize MS13932-2 (96906)	EA		2											
X2 F 00089	DR6DS40	RING SET, PISTON: 0.040 in oversize (66289)	EA		1											
X1 00090		RING, COMPRESSION: top groove, 0.040 in oversize MS13933-3 (96906)	EA		1											
X1 00091		RING, OILS: bottom groove 0.040 oversize M313931-3 (96906)	EA		1											
X1 00092		RING, SCRAPER: 2nd and 3rd groove, 0.040 in oversize MS13932-3 (96906)	EA		2											
P F 00093	2805-921-4948	ROD ASSEMBLY, CONNECTING DA49AS1 (66289)	EA		1	2	2	4	2	2	4	45	30			
P F 00094	3120-375-4611	BEARING, SLEEVE: piston pin HG133A1 (66289)	EA		1	*	2	2	*	2	2	15	100	1	14	
F 00095	5306-514-8458	BOLT, SHOULDER: connecting rod	EA		2	*	*	*	*	*	*	*	*	1	12	
F 00096	5310-18-7848	NUT, PLAIN, HEXAGON: connecting rod bolt	EA		2	*	*	*	*	*	*	*	*	1	21	
F 00097	5310-264-4040	NUT, STAMPED: connecting rod bolt	EA		2	*	*	*	*	*	*	*	*	1	22	
X1 00098	2805-4643552	ROD, CONNECTING DA49A (66289)	EA		1									1	13	
P F 00099	2805-464,3743	SIM: connecting rod (as required) QA113 (66289)	EA			*	2	2	*	2	2	12	10	1	23	

(1) SMR CODE	(2) FEDERAL STOCK NUMBER	(3) DESCRIPTION  REFERENCE NUMBER & MFR. CODE USABLE ON CODE	(4) UNIT OF ISSUE	(5) QTY UNIT OF MEAS	(6) INC IN UNIT	(7) 30 DAY DS MAINT ALLOWANCE			(8) 30 DAY GS MAINT ALLOWANCE			(9) 1-YR ALW PER 100 EQUIP CNTGCY	(10) DEPOT MAINT ALW PER 100 EQUIP	ILLUSTRATION	
						(a)	(b)	(c)	(a)	(b)	(c)			(a)	(b)
						1-20	21-50	51-100	1-20	21-50	51-100			FIGURE NO.	ITEM NO/
00100 F	5306-938-4416	0105 - VALVES, CAMSHAFTS, AND TIMING SYSTEM BOLT, MACHINE: lifter	EA		2	*	*	*	*	*	*	*		3	23
00101 0	5306-225-8504	BOLT, MACHINE: tappet chamber cover	EA		1	*	*	*	*	*	*	*		2	18
00102 P F	2805-353-5875	CAMSHAFT ASSEMBLY, ENGINE	EA		1	*	*	2	*	*	2	6	9		
00103 X1		EA110BS1 (66289) CAMSHAFT	EA		1									3	13
00104 X1	2805-625-9292	EA11OC (66289) GEAR, HELICAL: camshaft	EA		1									3	11
00105 X2 F	5315-010-6749	GB50 (66289) KEY, WOODRUFF: camshaft gear	EA		1									3	12
00106 X1	2805-371-4610	PL21 (66289) PIN, GROOVED, HEADLESS: camshaft cover	EA		1									3	16
00107		PA314-1 (66289)													
X2 0 00108	2805-360-8334	COVER, PLATE: tappet chamber SA68 (66289)	EA		1									2	16
X1 00109	2805-695-8784	GASKET: tappet chamber cover QD61)2 (66289) (Component of GASKET SET, Stock No. 2805-353-5908, See Group 0100) (Can be manufactured from PAPER, GASKET Stock No. 5330-233-5845)	EA		1									2	15
P F 00110	2805-249-9905	GEAR, HELICAL: crankshaft GA39 (66289)	EA		1	*	*	2	*	*	2	6	3	1	9
P F 00111	2805-339-5598	LIFTER, VALVE F63 (66289)	EA		2	2	2	3	2	2	3	30	10	3	22
P F 00112	2805-277-2918	LOCK, VALVE SPRING RETAINER AH9 (66289)	EA		4	2	3	5	2	3	5	60	120	3	24
F 00113	5315-710-9252	PIN, HOLLOW: valve stem guide	EA		2	*	*	*	*	*	*	*	*	3	3

(1) SMR CODE	(2) FEDERAL STOCK NUMBER	(3) DESCRIPTION  REFERENCE NUMBER & MFR. CODE USABLE ON CODE	(4) UNIT OF ISSUE	(5) QTY UNIT OF MEAS	(6) INC IN UNIT	(7) 30 DAY DS MAINT ALLOWANCE			(8) 30 DAY GS MAINT ALLOWANCE			(9) 1-YR ALW PER 100 EQUIP CNTGCY	(10) DEPOT MAINT ALW PER 100 EQUIP	ILLUSTRATION	
						(a)	(b)	(c)	(a)	(b)	(c)			(a)	(b)
						1-20	21-50	51-100	1-20	21-50	51-100			FIGURE NO.	ITEM NO/
P F 00114	2805-301-2940	ROTOR, ENGINE POPPET VALVE AG31 (66289)	EA		2	2	3	5	2	3	5	60	120	3	25
X2 F 00115	2805-620-0156	SEAT, SPRING CENTERING: valve spring AG345 (66289)	EA		2									3	27
P F 00116	2805-776-8151	SEAT, VALVE HF201D (66289)	EA		2	2	2	3	2	2	3	30	150	3	2
P F 00117	2805-664-7876	SPRING, HELICAL, COMPRESSION: valve AF54 (66289)	EA		2	3	5	10	3	5	10	120	200	3	26
P F 00118	2805-776-8153	VALVE, ENGINE: intake and exhaust AE75D (66289)	EA		2	2	3	5	2	3	5	60	120	3	1
0 00119	5310-205-9981	WASHER, FLAT: tappet chamber cover screw	EA		1	*	*	*	*	*	*	*	*	2	17
00120		0106 - ENGINE WBRICATIOII S!STIIN													
P F 00121	3110-100-6153	BALL, BEARING: oil pump check ME38A (66289)	EA		1	SEE	GRP	9901						4	5
X2 F 00122	2805-353-5844	BASE, ENGINE BB128A (66289)	EA		1									3	20
P F 00123	2805-601-9918	BODY ASSEMBLY, OIL PUMP KA642S1 (66289)	EA		1	*	2	2	*	2	2	15	75		
P F 00124	3110-100-6153	BALL, BEARING: oil pump body M38A (66289)	EA		1	SEE	GRP	9901						4	5
X1 00125		BODY, OIL PUMP KA64-2 (66289)	EA		1									4	3
X1 00126		PLUG, EXPANSION: oil pump body PF132 (66289)	EA		1									4	11
F 00127	4730-042-8988	PLUG, PIPES oil pump body	EA		1	*	*	*	*	*	*	*	*	4	12
F 00128	4730-018-9566	PLUG, PIPE: oil pump body	EA		1	*	*	*	*	*	*	*	*	4	14



(1) SMR CODE	(2) FEDERAL STOCK NUMBER	(3) DESCRIPTION  REFERENCE NUMBER & MFR. CODE USABLE ON CODE	(4) UNIT OF ISSUE	(5) QTY UNIT OF MEAS	(6) INC IN UNIT	(7) 30 DAY DS MAINT ALLOWANCE			(8) 30 DAY GS MAINT ALLOWANCE			(9) 1-YR ALW PER 100 EQUIP CNTG	(10) DEPOT MAINT ALW PER 100 EQUIP	ILLUSTRATION	
						(a)	(b)	(c)	(a)	(b)	(c)			(a)	(b)
						1-20	21-50	51-100	1-20	21-50	51-100			FIGURE NO.	ITEM NO/
X1 00129	2805-05-2186	SEAT, BALL: oil pump body XF30 66289)	EA		1									4	4
X1 00130	5340-256-7146	SPRING, HELICAL, COMPRESS: oil pump PH165 (66289)	EA		1									4	13
F 00131	5306-299-2393	BOLT, MACHIINE: engine bases to crankcase	EA		12	*	*	*	*	*	*	*	*	3	19
F 00132	5306-292-5785	BOLT, MACHINE: oil pump mtg	EA		2	*	*	*	*	*	*	*	*	4	1
P F 00133	2805-147-3739	CAP, PUSH ROD: plunger KF19A (66289)	EA		1	*	*	2	*	*	2	9	7	4	9
0 00134	4730-254-6228	ELBOW, PIPE TO TUBE: breather line	EA		2	*	*	*	*	*	*	*	*	5	13
X1 00135	2805-353-5904	GASKET: engine base QD675 66289) (Component of GASKET SET, Stock No. 2805-353-5908, See Group 0100) (Can be manufactured from PAPER, Stock No. 5330-7-8469)	EA		1									3	21
F 00136	5315-353-5882	PIN, STRAIGHT, HEADLESS: plunger	EA		1	*	*	*	*	*	*	*	*	4	10
0 00137	4730-045-9769	PLUG, PIPE, MAGNETIC: oil drain	EA		1	*	*	*	*	*	*	*	*	2	34
X2 0 00138		PLUG, PIPE: oil filler, case iron, square head, 1/2-14 thd size, w/gage rod XK4 66289)	EA		1									2	33
X2 F 00139	2805-46-7435	PLUNGER, OIL PUMP KF27B (66289)	EA		1									4	8
X2 F 00140	2805-741-0243	RETAINER, CHECK BALL PK50A (66289)	EA		1									4	6
P F 00141	5340-147-3745	SPRING, HELICAL, COMPRESSION: oil pump plunger PM158 (66289)	EA		1	*	2	2	*	2	2	15	100	4	7
P F 00142	2940-601-9919	STRAINER, OIL PUMP RD137 (66289)	EA		1	*	*	2	*	*	2	9	15	4	15

(1) SMR CODE	(2) FEDERAL STOCK NUMBER	(3) DESCRIPTION  REFERENCE NUMBER & MFR. CODE USABLE ON CODE	(4) UNIT OF ISSUE	(5) QTY OF MEAS	(6) INC IN UNIT	(7) 30 DAY DS MAINT ALLOWANCE			(8) 30 DAY GS MAINT ALLOWANCE			(9) 1-YR ALW PER 100 EQUIP CNTGCY	(10) DEPOT MAINT ALW PER 100 EQUIP	ILLUSTRATION	
						(a)	(b)	(c)	(a)	(b)	(c)			(a)	(b)
						1-20	21-50	51-100	1-20	21-50	51-100			FIGURE NO.	ITEM NO/
X2 0 00143 F 00144 F 00145 00146	2940-464-3772 5310-582-5965 5310-582-5965	TUB ASSEMBLY, METAL: crankcase breather RM494 (66289) WASHER, LOCK: engine base to crankcase WASHER, LOCK: oil pump mtg	EA EA EA		1 12 2									5 3 4	14 18 2
X2 0 00147 P 0 00148	2990-625-9303 2990-618-6556	0107 - ENGINE STARTING SYSTEM (OTHER THAN ELECTRICAL) PULLEY, ENGINE STARTING U222 (66289) STARTER ROPE, ENGINE U268 (662895) (Can be manufactured from CORD, COTTON, Stock No. 4020-41-8439)	EA EA		1 1									2 2	1 29
X2 0 00149 00150 X1 00151	2805-251-3219	WASHER, LOCK: starting pulley 12199A (79960) 0108 - MANIFOLDS GASKET: intake manifold QB77 (66289) (Component of GASKETT SET, Stock No.2805-353-5908, See Group 0100)	EA EA		1 1									2 5	2 3
X2 0 00152 0 00153 0 00154 0 00155	2805-374-3129 4730-018-9566 5305-225-3839 5310-582-5965	MANIFOLD, INTAKE: gasoline engine LC269A (66289) PLUG, PIPE: intake manifold SCREW, CAP, HEAD: intake manifold WASHER, LOCK: intake manifold	EA EA EA EA		1 1 2 2		*	*	*	*	*	*	*	5 5 5 5	4 9 8 7

(1) SMR CODE	(2) FEDERAL STOCK NUMBER	(3) DESCRIPTION  REFERENCE NUMBER & MFR. CODE USABLE ON CODE	(4) UNIT OF ISSUE	(5) QTY UNIT OF MEAS	(6) INC IN UNIT	(7) 30 DAY DS MAINT ALLOWANCE			(8) 30 DAY GS MAINT ALLOWANCE			(9) 1-YR ALW PER 100 EQUIP CNTGCY	(10) DEPOT MAINT ALW PER 100 EQUIP	ILLUSTRATION		
						(a)	(b)	(c)	(a)	(b)	(c)			(a)	(b)	
						1-20	21-50	51-100	1-20	21-50	51-100			FIGURE NO.	ITEM NO/	
00156		GROUP 03 - FUEL SYSTEM														
00157		0301 - CARBURETOR, FUEL INJECTOR														
00158	5306-207-6474	BOLT, MACHINE: carburetor mtg	EA		2	*	*	*	*	*	*	*		5	5	
00159	2910-654-3498	CARBURETOR, FLOAT: engine (Includes components of GASKET SET, Stock No. 2910-807-7153)	EA		1	2	4	8	2	4	8	90	9	5	11	
00160	5330-147-3307	GASKET: carburetor flange QC58 (66289) (Component of GASKET SET, Stock No. 2805-353-5908, See Group 0100)	EA		1									5	10	
00161	2910-807-7153	GASKET SET: carburetor C181-329 (79960)	EA		1	2	4	8	2	4	8	90	100			
00162	2910-980-1705	GASKET: bowl to body C142-68 (79960)	EA		1									5	12	
00163	5330-291-9873	WASHER, NONMETALLIC: discharge jet T5-48 (79960)	EA		1											
00164	5330-53010	WASHER, NONMETALLIC FUEL VALVE SEAT T56-20 (79960)	EA		1											
00165	5330-358-5683	WASHER, NONMETALLIC MAIN JET T56-24 (79960)	EA		1											
00166	5330-176-4123	WASHER, NONMETALLIC: main jet adjustment T56-23 (79960)	EA		1											
00167	5310-407-9566	WASHER, LOCK: carburetor mtg	EA		2	*	*	*	*	*	*	*	*	5	6	
00168	0304 - AIR CLEMR															
00169	2940-141-9296	AIR CLEANER, INTAKE T12B1 (78940)	EA		1											
00170	2940-830-0150	CAP 179B1 (78940)	EA		1									5	2	

(1) SMR CODE	(2) FEDERAL STOCK NUMBER	(3) DESCRIPTION  REFERENCE NUMBER & MFR. CODE USABLE ON CODE	(4) UNIT OF ISSUE	(5) QTY UNIT OF MEAS	(6) INC IN UNIT	(7) 30 DAY DS MAINT ALLOWANCE			(8) 30 DAY GS MAINT ALLOWANCE			(9) 1-YR ALW PER 100 EQUIP CNTG	(10) DEPOT MAINT ALW PER 100 EQUIP	ILLUSTRATION	
						(a)	(b)	(c)	(a)	(b)	(c)			(a)	(b)
						1-20	21-50	51-100	1-20	21-50	51-100			FIGURE NO.	ITEM NO/
X1 00171		CUP, OIL 17681 (78940)	EA		1									5	24
P 0 00172	5330-245-5460	WASHER, NONMETALLIC: base A7419 (78940)	EA		1	2	4	8	2	4	8	90	100	5	23
P 0 00173	5330-253-2469	WASHER, NONMETALLIC: filter 615A1 (78940)	EA		1	2	4	8	2	4	8	90	100	5	25
0 00174	5306-207-9152	BOLT, MACHINE: bracket mtg	EA		1	*	*	*	*	*	*	*	*	5	20
X2 0 00175	2940-047-4495	BRACKET ASSEMBLY, AIR CLEANER BI291S1 (66289)	EA		1										
X1 00176		BRACKET, AIR CLEANER B1291-6 (66289)	1											5	17
X1 00177	2910-447-9260	GASKET: air cleaner clamp QD647 (66289) (Component of GASKET SET, Stock No. 2805-353-5908, See Group 0100) (Can be manufactured from PAPER, Stock No. 5330270-8469)	EA	1	5	15									
O 00178	5305-808-9977	SCREW, MACHINE: air cleaner bracket	EA		1	*	*	*	*	*	*	*	*	5	16
O 00179	5310-013-4551	NUT, PLAIN, HEXAGON: air cleaner bracket mtg	EA		1	*	*	*	*	*	*	*	*	5	21
O 00180	5310-366-6163	NUT, PLAIN, WING: air cleaner mtg stud	EA		1	*	*	*	*	*	*	*	*	5	1
O 00181	53050500	SCREW, CAP, HEXAGON HEAD: clip mtg	EA		1	*	*	*	*	*	*	*	*	5	18
O 00182	5307-275-3759	STUD, PLAIN: air cleaner mtg	EA		1	*	*	*	*	*	*	*	*	5	22
X2 0 00183	2940-315-1916	SUPPOT, AIR CLEANER BRACKET PG343A (66289)	EA		1									5	19
O 00184	5310-582-5965	WASHER, LOCK: clip mtg	EA		2	*	*	*	*	*	*	*	*	5	7

(1) SMR CODE	(2) FEDERAL STOCK NUMBER	(3) DESCRIPTION  REFERENCE NUMBER & MFR. CODE USABLE ON CODE	(4) UNIT OF ISSUE	(5) QTY UNIT OF MEAS	(6) INC IN UNIT	(7) 30 DAY DS MAINT ALLOWANCE			(8) 30 DAY GS MAINT ALLOWANCE			(9) 1-YR ALW PER 100 EQUIP CNTG	(10) DEPOT MAINT 100 EQUIP	ILLUSTRATION	
						(a)	(b)	(c)	(a)	(b)	(c)			(a)	(b)
						1-20	21-50	51-100	1-20	21-50	51-100			FIGURE NO.	ITEM NO/
00185 X2 0	2805-353-5859	0306 - TANKS, LINES, FITTINGS, HEADERS BRACKET, FUEL TANK BK85 (66289)	EA		1									6	19
00186 O	4730-231-5632	ELBOW, PIPE TO TUBE: fuel line	EA		2	*	*	*	*	*	*	*	*	6	8
00187 O	5305-269-3211	SCREW, CAP, HEXAGON HEAD: fuel tank bracket	EA		2	*	*	*	*	*	*	*	*	6	17
00188 M 0	2910-740-3354	STANDPIPE, FUEL TANK RM1280A (66289)	EA		1									6	9
00189 O	4730-249-9721	MANUFACTURE FROM: NIPPLE, PIPE	EA		1	*	*	*	*	*	*	*	*		
00190 P 0	4710-277-7581	TUBE, COPPER (3/4 in. required)	FT		SEE		GRP	9501							
00191 X2 0		TANK ASSEMBLY, FUEL WE306GS1 (66289)	EA		1									6	
00192 X2 0	5340-974-9537	RING, RETAINING: fuel tank strainer PK127A (66289)	EA		1									6	22
00193 X2 0	4730-812-4303	STRAINER, FUEL TANK RD127A (66289)	EA		1									6	20
00194 X2 0		STRAP ASSEMBLY, FUEL TANK PG504SI (66289)	EA		2										
00195 O	5310-013-4551	NUT, PLAIN, HEXAGON: fuel tank strap	EA		2	*	*	*	*	*	*	*	*	6	3
00196 X2 0		SCREW, MACHINE: fuel tank strap XA88 (66289)	EA		2									6	7
00197 X2 0	2910-371-4613	STRAP, FUEL TANK PG504 (66289)	EA		2									6	5
00198 O	5310-582-5965	WASHER, LOCK: fuel tank strap	EA		2	*	*	*	*	*	*	*	*	6	4
30199															

(1) SMR CODE	(2) FEDERAL STOCK NUMBER	(3) DESCRIPTION  REFERENCE NUMBER & MFR. CODE USABLE ON CODE	(4) UNIT OF ISSUE	(5) QTY UNIT OF MEAS	(6) INC IN UNIT	(7) 30 DAY DS MAINT ALLOWANCE			(8) 30 DAY GS MAINT ALLOWANCE			(9) 1-YR ALW PER 100 EQUIP CNTG	(10) DEPOT MAINT ALW PER 100 EQUIP	ILLUSTRATION	
						(a)	(b)	(c)	(a)	(b)	(c)			(a)	(b)
						1-20	21-50	51-100	1-20	21-50	51-100			FIGURE NO.	ITEM NO/
X2 0 00200	2910-830-5496	TANK ASSEMBLY: fuel WE306A (66289)	EA		1									6	6
P 0 00201	2910-846-0943	CAP, FUEL TANK RC118 (66289)	EA		1	2	2	3	2	2	3	30	3	6	1
M 0 00202		CHAIN, FUEL TANK CAP MANUFACTURE FROM:	EA		1									6	2
P 0 00203	4010-186-9388	CHAIN, WELDLESS (6 in required)	FT			SEE	GRP	9501							
X2 0 00204	5310-814-5973	WASHER, FLAT, STRAINER P42 (66289)	EA		1									6	21
M 0 00205	2910-366-6289	TUBE ASSEMBLY METAL: strainer to carburetor RM980 (662895)	EA		1									6	16
O 00206	4730-011-6452	MANUFACTURE FROM: NUT, TUBE COUPLING	EA		2	*	*	*	*	*	*	*	*		
P 0 00207	4710-277-5525	TUBE, COPPER (24 in required)	FT			SEE	GRP	9501							
O 00208	5310-194-0021	WASHER, LOCK: fuel tank bracket	EA		2	*	*	*	*	*	*	*	*	6	18
00209		0308 - ENGINE SPIED GOVERNOR AND CONTROLS													
P F 00210	3120-353-5942	BEARING, SLEEVE: governor TC3231 (66289)	EA		1	2	2	3	2	2	3	30	100	3	14
F 00211	5306-299-2393	BOLT, MACHHINE: bracket mtg	EA		2	*	*	*	*	*	*	*	*	3	5
X2 P 00212	2990-376-0386	BRACKET, GOVERNOR SHAFT TC325 (66289)	EA		1									3	6
X2 0 00213	2990-874-3232	CONTROL ASSEMBLY, GOVERNOR TT74D (66289)	EA		1									7	
X1 00214	2910-992-8627	BRACE, CONTROL BRACKET PG563 (66289)	EA		1									7	5

(1) SMR CODE	(2) FEDERAL STOCK NUMBER	(3) DESCRIPTION  REFERENCE NUMBER & MFR. CODE USABLE ON CODE	(4) UNIT OF ISSUE	(5) QTY UNIT OF MEAS	(6) INC IN UNIT	(7) 30 DAY DS MAINT ALLOWANCE			(8) 30 DAY GS MAINT ALLOWANCE			(9) 1-YR ALW PER 100 EQUIP CNTGCY	(10) DEPOT MAINT ALW PER 100 EQUIP	ILLUSTRATION		
						(a)	(b)	(c)	(a)	(b)	(c)			(a)	(b)	
						1-20	21-50	51-100	1-20	21-50	51-100			FIGURE NO.	ITEM NO/	
X1 00215		CONTROL, GOVERNER VE584A (66289)	EA		1											
X1 00216	2990-536-2962	BLOCK, SWIVEL: adjusting screw TC301-3 (66289)	EA		1									7	2	
X1 00217		BLOCK CONTROL VC35 (66289)	EA		1									7	8	
X1 00218		LEVER, CONTROL: governor adjusting VB179A (66289)	EA		1									7	3	
O 00219	5315-839-2325	PIN, COTTER: support pin spring	EA		1	*	*	*	*	*	*	*	*	7	11	
O 00220	5315-265-9197	PIN, STRAIGHT, HEADLESS: lever support	EA		1	*	*	*	*	*	*	*	*	7	10	
X1 00221	5340-256-7147	SPRING, HELICAL, COMPRESSION: lever support pin PM117 (66289)	EA		1									7	12	
O 00222	5310-809-4058	WASHER, FLAT: support pin spring	EA		1	*	*	*	*	*	*	*	*	7	13	
O 00223	5310-898544	WASM, FLAT: swivel block	EA		1	*	*	*	*	*	*	*	*	7	4	
M O 00224		GASKETS: bracket to crankcase QD95 (66289) MANUFACTURE FRM: PAPER, GASKET (2 in x 2 in required)	EA		1									7	9	
P O 00225	5330-841-2729		SH			SEE	GRP	9501								
O 00226	5310-637-1058	NUT, PLAIN, HEXAGON: adjusting screw	EA		2	*	*	*	*	*	*	*	*	7	1	
X1 00227		SCREW, ADJUSTING: governor spring PI121A (66289)	EA		1									7	16	
O 00228	5305-958-5245	SCREW, MACHINE: bracket mtg	EA		1	*	*	*	*	*	*	*	*	7	6	
O 00229	5310-194-9211	WASHER, LOCK: bracket mtg	EA		1	*	*	*	*	*	*	*	*	7	7	
P F 00230	2990-677-1771	FLYWEIGHT ASSEMBLY, GOVERNOR TC322DS1 (66289)	EA		2	*	*	2	*	*	2	10	10	3	10	

(1) SMR CODE	(2) FEDERAL STOCK NUMBER	(3) DESCRIPTION  REFERENCE NUMBER & MFR. CODE USABLE ON CODE	(4) UNIT OF ISSUE	(5) QTY UNIT OF MEAS	(6) INC IN UNIT	(7) 30 DAY DS MAINT ALLOWANCE			(8) 30 DAY GS MAINT ALLOWANCE			(9) 1-YR ALW PER 100 EQUIP CNTG	(10) DEPOT MAINT ALW PER 100 EQUIP	ILLUSTRATION	
						(a)	(b)	(c)	(a)	(b)	(c)			(a)	(b)
						1-20	21-50	51-100	1-20	21-50	51-100			FIGURE NO.	ITEM NO/
X1 00231	5330-285-5061	GASKET: governor bracket QD571 (66289) (Component of GASKET SET, Stock No. 2805-353-5908, See Group 0100) (Can be manufactured from PAPER, Stock No. 5330-270-8469)	EA		1									3	7
X2 0 00232		LEVER, GOVERNOR CONTROL TC432s (66289)	EA		1									7	14
O 00233	5310-576-1783	NUT, PLAIN, HEXAGON: governor control lever mtg	EA		1	*	*	*	*	*	*	*	*	7	18
X2 F 00234	5315-616-4492	PIN, SPRING: governor flywheel PA340 (66289)	EA		2									3	9
X2 F 00235	2990-353-5950	SPACER, GOVERNOR TC433 (66289)	EA		1									3	17
P 0 00236	2990-224-8188	SPRING, HELICAL, EXTENSION: governor PM74 (66289)	EA		1	*	2	2	*	2	2	15	24	7	17
X2 F 00237	2990-353-5943	YOKE, GOVERNOR TC324D (66299)	EA		1									3	8
00238		0309 - MUEL FILTIUIS													
P 0 00239	2910-099-5639	STRAINER ASSEMBLY, FUEL 830 (00165)	EA		1	2	2	2	2	2	2	25	10	6	23
X1 00240		BAIL ASSEMBLY, STRANER 100A (00165)	EA		1									6	15
X2 0 00241		BOWL, SEDIMENT: strainer, glass M1002 (00165)	EA		1									6	14
X1 00242		COVER, STRAINER 100-1 (00165)	EA		1									6	11
P 0 00243	2910-358-5327	STRAINER ELEMENT, SEDIMENT 100-11 (00165)	EA		1	2	4	8	2	4	8	90	60	6	12
X1 00244		VALVE ASSEMBLY, NEEDLE 100-6-7-8-9 (00165)	EA		1									6	10



(1) SMR CODE	(2) FEDERAL STOCK NUMBER	(3) DESCRIPTION  REFERENCE NUMBER & MFR. CODE USABLE ON CODE	(4) UNIT OF ISSUE	(5) QTY OF MEAS	(6) INC IN UNIT	(7) 30 DAY DS MAINT ALLOWANCE			(8) 30 DAY GS MAINT ALLOWANCE			(9) 1-YR ALW PER 100 EQUIP CNTGCY	(10) DEPOT MAINT ALW PER 100 EQUIP	ILLUSTRATION	
						(a)	(b)	(c)	(a)	(b)	(c)			(a)	(b)
						1-20	21-50	51-100	1-20	21-50	51-100			FIGURE NO.	ITEM NO/
X2 0 00245		WASHER, NONMETALLIC: strainer bowl 100-10n (00165)	EA		1									6	13
00246 X2 0		0312 - ACCELERATOR, TROTTLE OR CHOKE CONTROLS PIN, COTTOR: throttle lever rod	EA		1									7	19
00247 X2 0	2990-603-4790	X132 (66289) ROD, THROTTLE LEVER	EA		1									7	15
00248 00249 00250		VE304C (66289) GROUP 04 - EXHAUST SYSTE( 0401 - MUFFLER AND PIPES													
P 0 00251	2990-677-2375	MUFFLER, EXHAUST WD66B (66289)	EA		1	2	4	8	2	4	8	90	100	2	14
X2 0 00252		NIPPLE, PIPET: muffler to engine LJ158 (66289)	EA		1									2	13
00253 00254		GROUP 05 - COOLING SYSTEM 0502 - COWLING, DEFLECTORS, AIR DUCTS, SHROUDS, ETC.													
X2 0 00255	2805-310-7667	COVER, AIR SHROUD: cylinder head SE155 (66289)	EA		1									2	12
O 00256	5310-596-6326	NUT, SHEET, SPRING: screen mtg	EA		4	*	*	*	*	*	*	*	*	2	24
X2 0 00257	2805-310-7668	RETAINER, SCREEN, FLYWHEL HOUSING SE158 (66289)	EA		1									2	3
X2 0 00258	2805-377-4977	SCREEN, AIR SHROUD SE157 (66289)	EA		1									2	28
X2 0 00259	X	SCREW, CAP, SOCKET HEAD: shroud to crankcase 378 (66289)	EA		2									2	26
O 00260	5305-988-1723	SCREW, MACHINE: screen mtg	EA		4	*	*	*	*	*	*	*	*	2	30

(1) SMR CODE	(2) FEDERAL STOCK NUMBER	(3) DESCRIPTION  REFERENCE NUMBER & MFR. CODE USABLE ON CODE	(4) UNIT OF ISSUE	(5) QTY UNIT OF MEAS	(6) INC IN UNIT	(7) 30 DAY DS MAINT ALLOWANCE			(8) 30 DAY GS MAINT ALLOWANCE			(9) 1-YR ALW PER 100 EQUIP CNTGCY	(10) DEPOT MAINT ALW PER 100 EQUIP	ILLUSTRATION	
						(a)	(b)	(c)	(a)	(b)	(c)			(a)	(b)
						1-20	21-50	51-100	1-20	21-50	51-100			FIGURE NO.	ITEM NO/
O 00261	5305-988-1721	SCREW, MACHINE: shroud attaching	EA		4	*	*	*	*	*	*	*		2	32
X2 0 00262	2805-371-4616	SHROUD, FLYWHEEL SE154 (66289)	EA		1									2	23
X2 0 00263	5340-779-5991	SPACER, SLEEVE: cylinder head stud HF432 (66289)	EA		1									2	6
O 00264	5310-582-5965	WASHER, LOCK: shroud mtg	EA		4	*	*	*	*	*	*	*	*	2	31
O 00265 00266	5310-407-9566	WASHER,LOCK: shroud to crankcase	EA		2	*	*	*	*	*	*	*	*	2	25
00267 O 00268 P 0 00269	5306-272-3742	GROUP 06 - ELECTRICAL SYSTEM (ENGINE AND VEHICULER, ETC.) 0605 - IGNITION COMMENTS BOLT, MACHINE: magneto mtg	EA		1	*	*	*	*	*	*	*	*	9	10
X1 00270	2920-675-0548	CABLE ASSEMBLY, SPECIAL PURPOSE, ELECTRICAL: ignition YD176C (66289)	EA		1	*	2	2	*	2	2	15	10	8	1
P F 00271 P 0 00272	2920-047-4530	GASKET: magneto flange QD570A (66289) (Component or GASIK SET, Stock No. 2805-353-5908, See Group 0100) (Can be manufactured from PAPER, Stock No. 5330-233-5845)	EA		1									9	9
X1 00273	2920-804-0162	GEAR, HELICAL: magneto drive GD122A (66289)	EA		1	*	2	2	*	2	2	15	15	9	22
X1 00274	2920-708-3516	KIT, REPAIR PARTS: magneto KITS82796-1 (81336)	EA		1	6	13	25	6	13	25	300	100		
	3110-144-8998	BEARING, BALL, ANNUALR: rotor drive end C5949 (82796)	EA		1									8	18
	2920-585-4059	BEARING, SLEEVE: rotor can end A5950A (82796)	EA		1									8	12

(1) SMR CODE	(2) FEDERAL STOCK NUMBER	(3) DESCRIPTION  REFERENCE NUMBER & MFR. CODE USABLE ON CODE	(4) UNIT OF ISSUE	(5) QTY UNIT OF MEAS	(6) INC IN UNIT	(7) 30 DAY DS MAINT ALLOWANCE			(8) 30 DAY GS MAINT ALLOWANCE			(9) 1-YR ALW PER 100 EQUIP CNTGCY	(10) DEPOT MAINT ALW PER 100 EQUIP	ILLUSTRATION	
						(a)	(b)	(c)	(a)	(b)	(c)			(a)	(b)
						1-20	21-50	51-100	1-20	21-50	51-100			FIGURE NO.	ITEM NO/
X1 00275	5910-644-6204	CAPACITOR, FIXED, PAPER DIELECTRIC: magneto SXY24331 (82796)	EA		1									8	22
X1 00276	2920-319-5055	CONTACT SET, DISTRIBUTOR: magneto A2437A (82796)	EA		1									8	29
X1 00277	5330-366-7148	GASKET: magneto and cap to frame K498 (82796)	EA		1									8	30
X1 00278	2920-602-4263	RING, RETAINING: fulcrum contact mtg T1498 (82796)	EA		1									8	28
X1 00279	5340-699-9964	RING, RETAINING: rotor drive and C1498D (82796)	EA		1									9	8
X1 00280	5340-143-5280	RING, RETAINING: rotor shaft bearing B1498B (82796)	EA		1									8	17
X1 00281	5340-816-4239	RING, RETAINING: switch rod V1498 (82796)	EA		1									8	7
X1 00282	5305-281-6387	SCREW, ASSEMBLED WASHER: end cap mtg 10S10D (82796)	EA		1										
X1 00283	5305-614-0245	SCREW, MACHINE: end cap mtg AN50010-10 (81352)	EA		1									8	6
X1 00284	5310-576-5752	WASHER, LOCK: end cap mtg	EA		1									8	5
X1 00285	2920-356-1221	SEAL, PLAINT: rotor drive end G3861 (82796)	EA		1									9	6
X1 00286	5340-576-5825	SHIM, THRUST BEARING: rotor drive end C2723 (82796)	EA		2									8	16
X1 00287	5310-205-7981	WASHER, FLAT: rotor drive end A2492C (82796)	EA		1									9	7
X1 00288	5310-285-1591	WASHER, FLATS: rotor drive end A2492A (82796)	EA		1									9	5
X1 00289	9390-292-0355	WICK, FELT: breaker arm L2788 (82796)	EA		1									8	37

(1) SMR CODE	(2) FEDERAL STOCK NUMBER	(3) DESCRIPTION  REFERENCE NUMBER & MFR. CODE USABLE ON CODE	(4) UNIT OF ISSUE	(5) QTY UNIT OF MEAS	(6) INC IN UNIT	(7) 30 DAY DS MAINT ALLOWANCE			(8) 30 DAY GS MAINT ALLOWANCE			(9) 1-YR ALW PER 100 EQUIP CNTGCY	(10) DEPOT MAINT ALW PER 100 EQUIP	ILLUSTRATION	
						(a)	(b)	(c)	(a)	(b)	(c)			(a)	(b)
						1-20	21-50	51-100	1-20	21-50	51-100			FIGURE NO.	ITEM NO/
P O R 00290	2920-654-3499	MAGNETO, IGNITION FMXDE1B7U (82796) (Includes components of REPAIR KIT, Stock No. 2920-708-3516)	EA		1	2	2	3	2	2	3	30	2		
X1 00291	2920-286-2712	BEARING, SLEEVE: impulse coupling A2572 (82796)	EA		1									9	23
X1 00292	2920-358-6442	BUSHING, PRIMARY GROUND SWITCH: CABLE OUTLET C2744 (82796)	EA		1									8	4
X1 00293	2920-358-6719	CAP: distributor J2430A (82796)	EA		1									8	3
X1 00294	2920-319-5058	CLIP, COIL D6120 (82796)	EA		1									8	36
X1 00295	2920-294-4001	COIL, MAGNETO S2477C (82796)	EA		1									8	19
X1 00296	2920-806-0637	COUPLING ASSEMBLY: impulse SV2563C20 (82796)	EA		1										
X1 00297	2920-939-9835	HUD ASSEMBLY: coupling SZ2563 (82796)	EA		1									9	3
X1 00298	2920-428-7572	SPRING, HELICAL, TORSION: pawl C5963 (82796)	EA		1									9	4
X1 00299		SHELL, COUPLING ZX5957 (82796)	EA		1									9	1
X1 00300	2920-354-0741	SPRING, SPIRAL, TORSION: DRIVE D2565 (82796)	EA		1									9	2
X1 00301	2920-714-5869	COVER, MAGNET COIL B6030A (82796)	EA		2									9	16
X1 00302	2920-455-7098	FRAME, MAGNETO RX2425 (82796)	EA		1									9	18
X1 00303	2920-354-0750	HOLDER ASSEMBLY, CAM WICK G2788 (82796)	EA		1									8	33
X1 00304	2920-691-7884	INSULATOR, STANDOFF: high tension cable P2474X (82796)	EA		1									8	2

(1) SMR CODE	(2) FEDERAL STOCK NUMBER	(3) DESCRIPTION  REFERENCE NUMBER & MFR. CODE USABLE ON CODE	(4) UNIT OF ISSUE	(5) QTY UNIT OF MEAS	(6) INC IN UNIT	(7) 30 DAY DS MAINT ALLOWANCE			(8) 30 DAY GS MAINT ALLOWANCE			(9) 1-YR ALW PER 100 EQUIP CNTGCY	(10) DEPOT MAINT ALW PER 100 EQUIP	ILLUSTRATION	
						(a)	(b)	(c)	(a)	(b)	(c)			(a)	(b)
						1-20	21-50	51-100	1-20	21-50	51-100			FIGURE NO.	ITEM NO/
X1 00305	5315-616-5514	KEY, WOODRUFF: rotor to impulse coupling MS35756-6 (96906)	EA		1									9	21
X1 00306	5310-737-2632	NUT, CASTELLATED, HEXAGON: impulse coupling M2570 (82796)	EA		1									9	24
X1 00307	5310-428-7558	NUT: ground switch B2735A (82796)	EA		1									8	10
X1 00308	5315-831-0140	PIN, STRAIGHT, THREAD: impulse coupling S2568 (82796)	EA		1									9	20
X1 00309	2920-354-0766	PLATE ASSEMBLY, BEARING SUPPORT V4631 (82796)	EA		1									8	14
X1 00310	2920-315-1970	ROTOR, MAGNETO DW2480 (82796)	EA		1									8	15
X1 00311	5305-616-6013	SCREW, ASSEMBLED WASHER: breaker arm terminal and contact support 6S6U (82796)	EA		2										
X1 00312	5305-272-5306	SCREW, MACHINE: breaker and terminal and contact support 6S6U (82796)	EA		2									8	27
X1 00313	5310-013-1044	WASHER, LOCK: breaker are terminal and contact support 131044 (00000)	EA		2									8	26
X1 00314	5305-103-2684	SCREW, ASSEMBLED WASER: coil clip 6S3W (82796)	EA		1										
X1 00315	5305-984-4982	SCREW, MACHINE: coil clip MS35225-25 (96906)	EA		1									8	34
X1 00316	5310-209-0788	WASHER, LOCK: coil clip MS35335-30 (96906)	EA		1									8	35
X1 00317	5305-285-5282	SCREW, ASSEMBLED WASHER: contact support 8S6U (82796)	EA		1										
X1 00318	5305-012-1832	SCREW, MACHINE: contact support 8S6N (82796)	EA		1									8	31
X1 00319		WASHER, LOCK: contact support 121841 (00000)	EA		1									8	23

(1) SMR CODE	(2) FEDERAL STOCK NUMBER	(3) DESCRIPTION  REFERENCE NUMBER & MFR. CODE USABLE ON CODE	(4) UNIT OF ISSUE	(5) QTY UNIT OF MEAS	(6) INC IN UNIT	(7) 30 DAY DS MAINT ALLOWANCE			(8) 30 DAY GS MAINT ALLOWANCE			(9) 1-YR ALW PER 100 EQUIP CNTG	(10) DEPOT MAINT ALW PER 100 EQUIP	ILLUSTRATION	
						(a)	(b)	(c)	(a)	(b)	(c)			(a)	(b)
						1-20	21-50	51-100	1-20	21-50	51-100			FIGURE NO.	ITEM NO/
X1 00320	5305-647-2056	SCREW: condenser mtg 8S4U (82796)	EA		1									8	24
X1 00321	5305-958-5473	SCREW, MACHINE: bearing support 8S6G (82796)	EA		4									8	13
X1 00322	5305-647-2059	SCREW: vent cover 6S5N (82796)	EA		2									9	14
X1 00323	5305-723-9380	SETSCREW: coil bridge 25SS14A (82796)	EA		2									9	15
X1 00324	5930-358-7735	SWITCH, PUSH: ground CX2514C (82796)	EA		1										
X1 00325	5975-831-0182	BUSHING, GROUND SWITCH D4373 (82796)	EA		1									8	8
X1 00326	2920-740-6251	BUTTON, PUSH: ground switch S2514 (82796)	EA		1									8	11
X1 00327	2920-047-4176	SPRING, HELICAL, COMPRESSION: ground switch C2513A (82796)	EA		1									8	9
X1 00328	5310-647-2054	WASHER, FLAT: contact support B5969 (82796)	EA		1									8	25
X1 00329	5310-270-2172	WASHER, FLAT: contact support locking D2458 (82796)	EA		1									8	32
X1 00330		WASHER, LOCK: condenser mtg 121841 (00000)	EA		1									8	23
X1 00331	5310-013-1044	WASHER, LOCK: vent cover 131044 (00000)	EA		2									9	13
X1 00332	2920-714-5868	WIRE FABRIC: vent C6032B (82796)	EA		2									9	17
O 00333	5310-188-7848	NUT, PLAIN, HEXAGON: magneto mtg	EA		1	*	*	*	*	*	*	*	*	9	12
F 00334	5315-842-3044	PIN, COTTER: impulse coupling nut	EA		1	*	*	*	*	*	*	*	*	9	25



(1) SMR CODE	(2) FEDERAL STOCK NUMBER	(3) DESCRIPTION  REFERENCE NUMBER & MFR. CODE USABLE ON CODE	(4) UNIT OF ISSUE	(5) QTY UNIT OF MEAS	(6) INC IN UNIT	(7) 30 DAY DS MAINT ALLOWANCE			(8) 30 DAY GS MAINT ALLOWANCE			(9) 1-YR ALW PER 100 EQUIP CNTG	(10) DEPOT MAINT ALW PER 100 EQUIP	ILLUSTRATION		
						(a)	(b)	(c)	(a)	(b)	(c)			(a)	(b)	
						1-20	21-50	51-100	1-20	21-50	51-100			FIGURE NO.	ITEM NO/	
00350		GROUP 55 - PUMPS														
00351		5500 - PUMP ASSEMBLY														
X2 0		HANDLE, LIFTING: pump	EA		1									10		1
00352		12713 (05748)														
X2 0		HEAD, COUPLING: pump	EA		1									10		7
00353		11617 (05748)														
X2		NUT, PLAIN, HEXAGON: coupling mtg	EA		4									10		6
00354		2503 (05748)														
F	5310-012-0377	NUT, PLAIN, HEXAGON: housing to coupling head	EA		6	*	*	*	*	*	*	*	*	10		26
00355																
F	5310-012-0377	NUT, PLAIN, HEXAGON: pump mtg	EA		2	*	*	*	*	*	*	*	*	10		26
00356																
P F	4320-594-9715	PARTS KIT: impeller	EA		1	2	4	8	2	4	8	100	100			
00357																
X1	4320-032-2799	GASKET; body	EA		2	SEE	GRP	5501								
00358		1700 (05748)														
X1	4320-032-2798	GASKET: body	EA		1	SEE	GRP	5501								
00359		1699 (05748)														
X1	4320-353-0601	GASKET: check valve	EA		1	SEE	GRP	5505								
00360		3064 (05748)														
X1	4320-271-7390	SHIM: impeller	EA		2	SEE	GRP	5501								
00361		1349 (05748)														
X1	5310-353-0576	WASHER, FLAT: impeller shim	EA		1	SEE	GRP	5501								
00362		1348 (05749)														
X2 0		PLUG, PIPE: drain	EA		1									10		27
00363		3207 (05748)														
X2 FR		PUMP, CENTRIFUGAL	EA		1											
00364		18839SA (05748)														



(1) SMR CODE	(2) FEDERAL STOCK NUMBER	(3) DESCRIPTION  REFERENCE NUMBER & MFR. CODE USABLE ON CODE	(4) UNIT OF ISSUE	(5) QTY UNIT OF MEAS	(6) INC IN UNIT	(7) 30 DAY DS MAINT ALLOWANCE			(8) 30 DAY GS MAINT ALLOWANCE			(9) 1-YR ALW PER 100 EQUIP CNTG	(10) DEPOT MAINT ALW PER 100 EQUIP	ILLUSTRATION		
						(a)	(b)	(c)	(a)	(b)	(c)			(a)	(b)	
						1-20	21-50	51-100	1-20	21-50	51-100			FIGURE NO.	ITEM NO/	
X2 FR 00365		BODY, PUMP 1884OSAA (05748)	EA		1											
X1 00366	4320-353-0599	HOUSING, CENRIFUGAL PUMP 3060 (05748)	EA		1									10	17	
F 00367	5307-360-0579	STUD, PLAIN: head and suction	EA		9	*	*	*	*	*	*	*	*	10	16	
X2 F 00368		SCREW, CAP, HEXAGON HEAD: pump mtg 2238 (05748)	EA		2									10	30	
X2 F 00369		SPACER, PUMP MOUNTING 18270 (05748)	EA		2									10	29	
X2 F 00370		STUD, PLAIN: coupling mtg 2429 (05748)	EA		4									10	4	
X2 F 00371		WASHER, LOCK: coupling mtg 2606 (05748)	EA		4									10	5	
X2 F 00372		WASHER, LOCK : pump mtg 2604 (05748)	EA		2									10	28	
00373		5501 - SHAFTS, ROTORS, IMPELLERS														
X1 00374	4320-032-2799 1700	GASKET: body (05748) (Component of PARTS KIT, Stock No. 4320-594-9715, See Group 5500)	EA		2									10	8	
X1 00375	4320-032-2798	GASKET(: body 1699 (05748) (Component of PARTS KIT, Stock No. 4320-594-9715, See Group 5500)	EA		1									10	8	
X2 F 00376	4320-452-8809	IMPELLER, PUMP, CEATRIFUGAL 1690 (05748)	EA		1									10	15	
P F 00377	4320-594-9716	SEAL ASSEMBLY, SHAFT 18502SA (05748)	EA		1	*	2	2	*	2	2	15	15	10		
X1 00378	4320-353-0590	BUSHING, PLAIN, FLANGED: seal assembly 1977 (05748)	EA		1									10	10	

(1) SMR CODE	(2) FEDERAL STOCK NUMBER	(3) DESCRIPTION  REFERENCE NUMBER & MFR. CODE USABLE ON CODE	(4) UNIT OF ISSUE	(5) QTY OF UNIT MEAS	(6) INC IN UNIT	(7) 30 DAY DS MAINT ALLOWANCE			(8) 30 DAY GS MAINT ALLOWANCE			(9) 1-YR ALW PER 100 EQUIP CNTGCY	(10) DEPOT MAINT ALW PER 100 EQUIP	ILLUSTRATION	
						(a)	(b)	(c)	(a)	(b)	(c)			(a)	(b)
						1-20	21-50	51-100	1-20	21-50	51-100			FIGURE NO.	ITEM NO/
X1 00379	4320-353-0589	BUSHING SLEEVE: seal assembly 1962 (05748)	EA		1									10	2
X1 00380	4320-147-0292	RETAINER PACKING: grease seal 1346 (05748)	EA		1									10	11
X1 00381	5340-562-0738	RING, RETAINING: stationary 1345 (05748)	EA		1									10	9
X1 00382	5330-141-3389	SEAL, PLAIN, ENCASED: seal assembly 60388 (79150)	EA		1									10	3
X1 00383	4320-257-2272	SPRING, HELICAL, COMPRESSION: seal 1347 (05748)	EA		1									10	13
X1 00384	5330-251-4070	WASER, NONMETALLIC: impeller seal 1350 (05748)	EA		1									10	12
X1 00385	4320-271-7390	SHIM: impeller (as required) 1349 (05748) (Component of PARTS KIT, Stock No. 4320-594-9715, See Group 5500)	EA											10	14
X1 00386	5310-353-0576	WASHER, FLAT: impeller shim (as required) 1348 (05748) (Component of PARTS KIT, Stock No. 4320-594-9715, See Group 5500)	EA											10	14
00387 O 00388 O 00389	4730-277-6845	5505 - SUCTION AND/OR DISCHARGE ASSEMBLY ADAPTER, STRAIGHT, PIPE TO HOSE: discharge	EA		1	*	*	*	*	*	*	*	*	10	20
X2 O 00390 O 00391 X2 O 00392 X2 O 00393	4730-277-6845	ADAPTER, SRAIGHT, PIPE TO HOSE: suction	EA		1	*	*	*	*	*	*	*	*	10	20
	4320-353-0600	FLANGE, PIPE: suction 3063 (05748)	EA		1									10	25
	5310-012-0377	NUT, PLAIN, HEXAGON: suction flange	EA		3	*	*	*	*	*	*	*	*	10	26
		PLUG, PIPE: priming 3208 (05748)	EA		1									10	19
		TEE, PIPE: discharge 3438 (05748)	EA		1									10	18

(1) SMR CODE	(2) FEDERAL STOCK NUMBER	(3) DESCRIPTION  REFERENCE NUMBER & MFR. CODE USABLE ON CODE	(4) UNIT OF ISSUE	(5) QTY UNIT OF MEAS	(6) INC IN UNIT	(7) 30 DAY DS MAINT ALLOWANCE			(8) 30 DAY GS MAINT ALLOWANCE			(9) 1-YR ALW PER 100 EQUIP CNTGCY	(10) DEPOT MAINT ALW PER 100 EQUIP	ILLUSTRATION		
						(a)	(b)	(c)	(a)	(b)	(c)			(a)	(b)	
						1-20	21-50	51-100	1-20	21-50	51-100			FIGURE NO.	ITEM NO/	
X2 0 00394	4320-353-0602	VALVE, LIFT 3065SA (05748)	EA		1											
X1 00395	4320-353-0601	GASKET: check valve 3064 (05748) (Component of PARTS KIT, Stock No. 4320-5949715, See Group 5500)	EA		1									10	22	
X2 0 00396		SCREW, MACHINE: check valve eight 2847 (05748)	EA		1									10	24	
X2 0 00397		WEIGHT, CHECK VALVE: large 1508 (05748)	EA		1									10	21	
X2 0 00398	4510-919-2660	WEIGHT, CHECK VALVE: small 1339 (05748)	EA		1									10	23	
00399		5508 - LUBRICATORS														
X2 0 00400		COUPLING, PIPE: pump seal grease line 3226 (05748)	EA		1									10	34	
X2 0 00401	4730-277-3390	CUP, GREASE: pump seal 1684 (05748)	EA		1									10	33	
X2 0 00402		NIPPLE, PIPE: pump seal grease line 3261 (05748)	EA		1									10	35	
00403		GROUP 76 - FIRE FIGHTING														
00404		7638 - PORTABLE FIRE FIGHTING EQUIPMENT														
P 0 00405	4210-555-8837	EXTINGUISHERS, FIRE, MONOBROMTRIFLUOROMETHANE	EA		1	*	*	*	*	*	*	*	*			
00406		GROUP 95 - GENERAL USE STANDARDIZED PARTS														
00407		9501 - HARDWARE SUPPLIES AND BULK MATERIEL, COMMON														
P 0 00406	4010-186-9388	CHAIN, WELDLESS	FT		*	*	*	*	*	*	*	3	3			
P 0 00409	5330-841-2729	PAPER, GASKET	SH		*	*	*	*	*	*	*	2	2			

(1) SMR CODE	(2) FEDERAL STOCK NUMBER	(3) DESCRIPTION  REFERENCE NUMBER & MFR. CODE USABLE ON CODE	(4) UNIT OF ISSUE	(5) QTY UNIT OF MEAS	(6) INC IN UNIT	(7) 30 DAY DS MAINT ALLOWANCE			(8) 30 DAY GS MAINT ALLOWANCE			(9) 1-YR ALW PER 100 EQUIP CNTGCY	(10) DEPOT MAINT ALW PER 100 EQUIP	ILLUSTRATION	
						(a)	(b)	(c)	(a)	(b)	(c)			(a)	(b)
						1-20	21-50	51-100	1-20	21-50	51-100			FIGURE NO.	ITEM NO/
P 0 00410	4710-277-7581	TUBE, COPPER	FT			*	*	*	*	*	*	2	2		
P 0 00411 00412 00413	4710-277-5525	TUBE, COPPER	FT			*	*	*	*	*	*	10	10		
P F 00414	3110-100-6153	BAIL, BEARING ME38A (66289)  GROUP 99 - PARTS PECULIAR 9901 - MULTI-LISTED PARTS	EA		2	2	2	2	2	2	2	24	10		

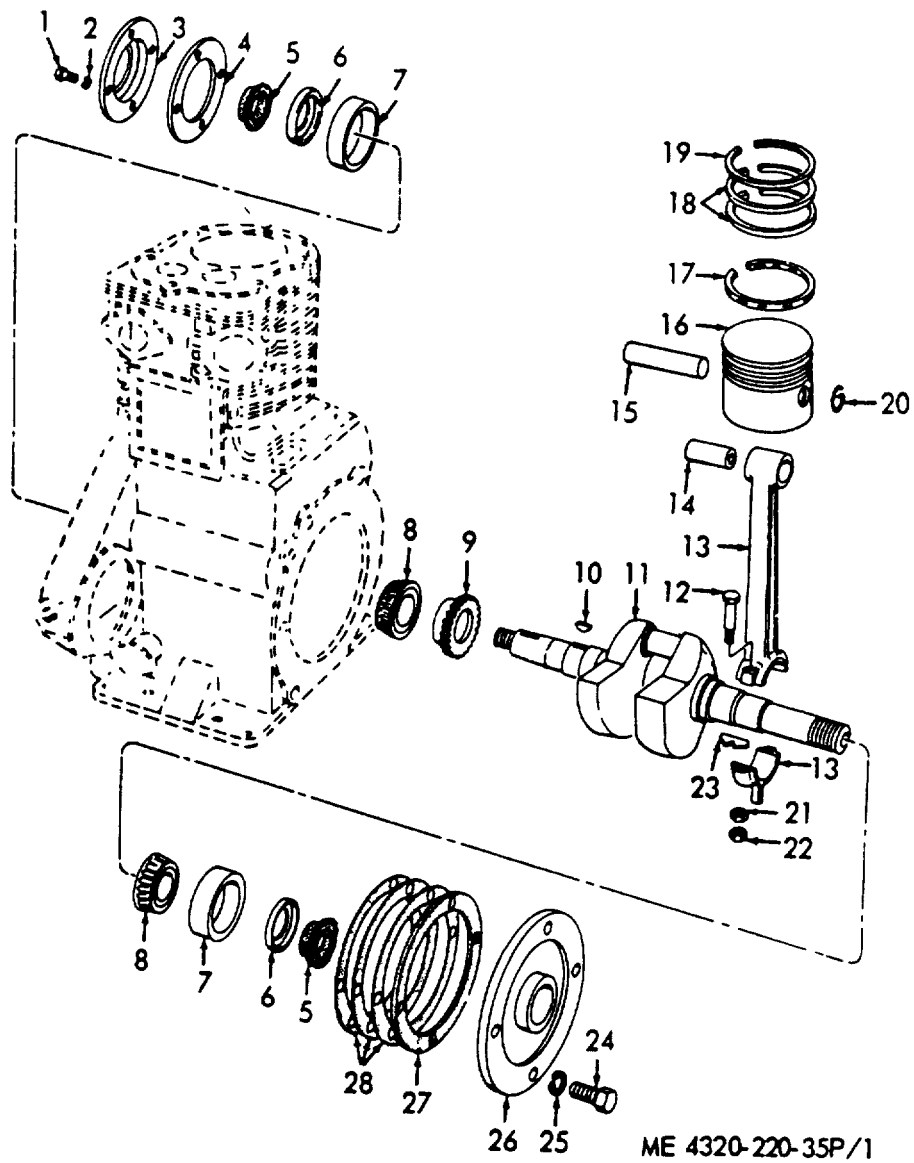
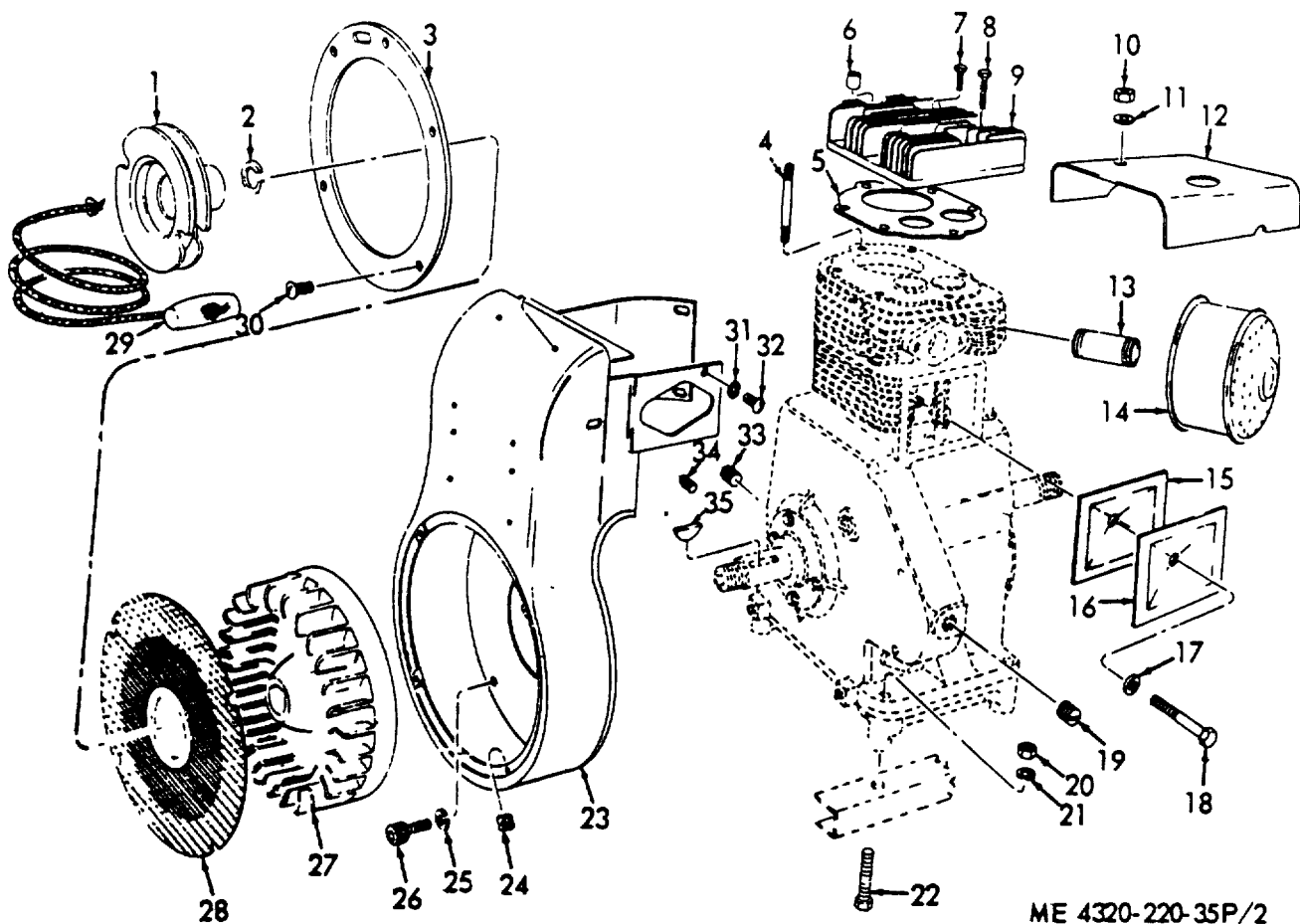


Figure 1. Crankshaft, Piston, and Connecting Rod.

INDEX TO PARTS, FIGURE 1

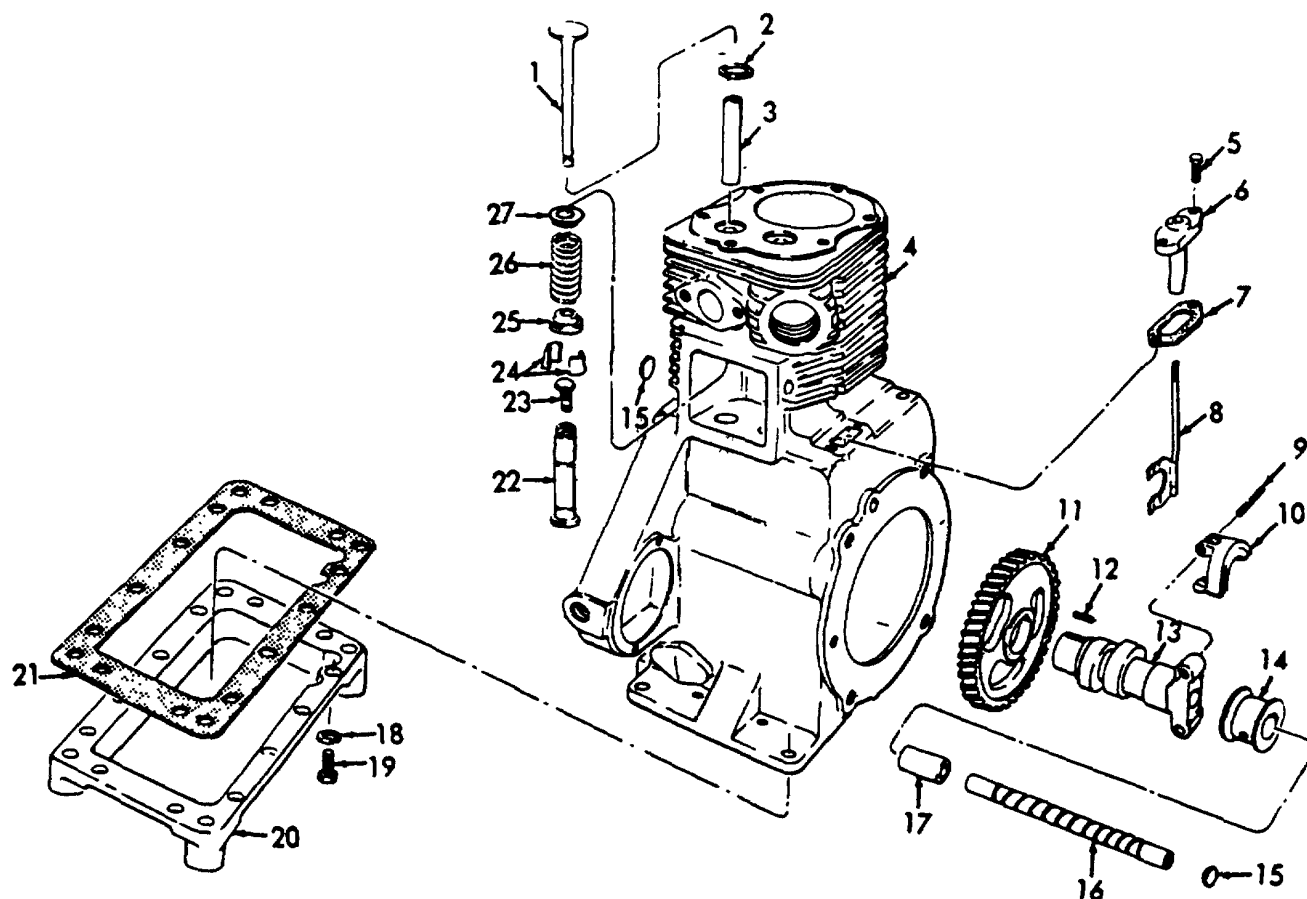
Reference Number	Functional Group	Item Name	Reference Number	Functional Group	Item Name
1	0101	BOLT	15	0104	PIN
2	0101	WASHER	16	0104	PISTON
3	0101	PLATE	17	0104	RING
4	0101	GASKMT	18	0104	RING
5	0102	GASKET	19	0104	RING
6	0102	REEDIER	20	0104	RING
7	0102	CUP	21	0104	NUT
8	0102	CONE-ROLLERS	22	0104	NUQT
9	0105	GEAR	23	0104	SHRK
10	0102	KE!	24	0101	SCREW
11	0102	CRMNKSHLFT	25	0101	WASHER
12	0104	BOLT	26	0101	PLATE
13	0104	ROD	27	0101	GASKET
14	0104	BEARING	28	0101	GASKET



ME 4320-220-35P/2

Figure 2. Cylinder Head, Pulley, Flywheel, and Shroud.  
INDEX TO PARTS, FIGURE 2

Reference Number	Functional Group	Item Name	Reference Number	Functional Group	Item Name
1	0107	PULLEY	19	0101	PLUG
2	0107	WASHER	20	0100	NUT
3	0502	RETAINER	21	0100	WASHER
4	0101	STUD	22	0100	BOLT
5	0101	GASKET	23	0502	SHROUD
6	0502	SPACER	24	0502	NUT
7	0101	SCREW	25	0502	WASHER
8	0101	BOLT	26	0502	SCREW
9	0101	HEAD	27	0103	FLYWHEEL
10	0101	NUT	28	0502	SCREEN
11	0101	WASHER	29	0107	ROPE AY
12	0502	COVER	30	0502	SCREW
13	0401	NIPPLE	31	0502	WASHER
14	0401	MUF	32	0502	SCREW
15	0105	GASKET	33	0106	PLUG
16	0105	COVER	34	0106	PLUG
17	0105	WASHER	35	0102	KEY
18	0105	BOLT			



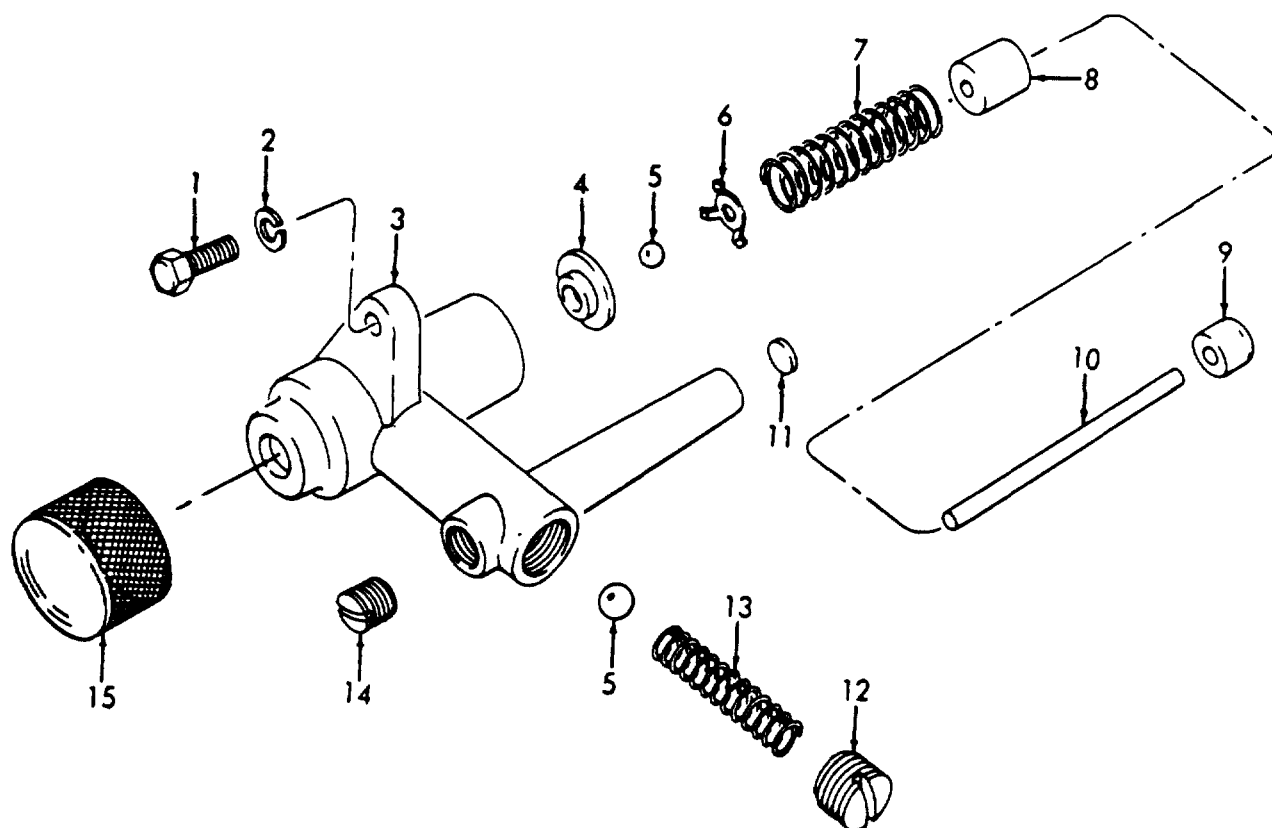
ME 4320-220-35P/3

Figure 3. Crankcase, Camshaft, Valve, and Components.

INDEX TO PARTS, FIGURE 3

Reference Number	Functional Group	Item Name	Reference Number	Functional Group	Item Name
1	0105	VALVE	14	0308	BELRING
2	0105	SEAT	15	0101	PLUG
3	0105	PIN	16	0105	PIN
4	0101	CYLINDER CRANKCASE	17	0308	SPACER
5	0308	BOLT	18	0106	WASHER
6	0308	BRACKET	19	0106	BOLT
7	0308	GASKET	20	0106	BASE
8	0308	YOKE	21	0106	GASKET
9	0308	PIN	22	0105	LIFTER
10	0308	FLYWEIGHT	23	0105	BOLT
11	0105	GEAR	24	0105	LOCK
12	0105	KEY	25	0105	ROTOR
13	0105	CAMSHLFT	26	0105	SPRING
			27	0105	SEAT



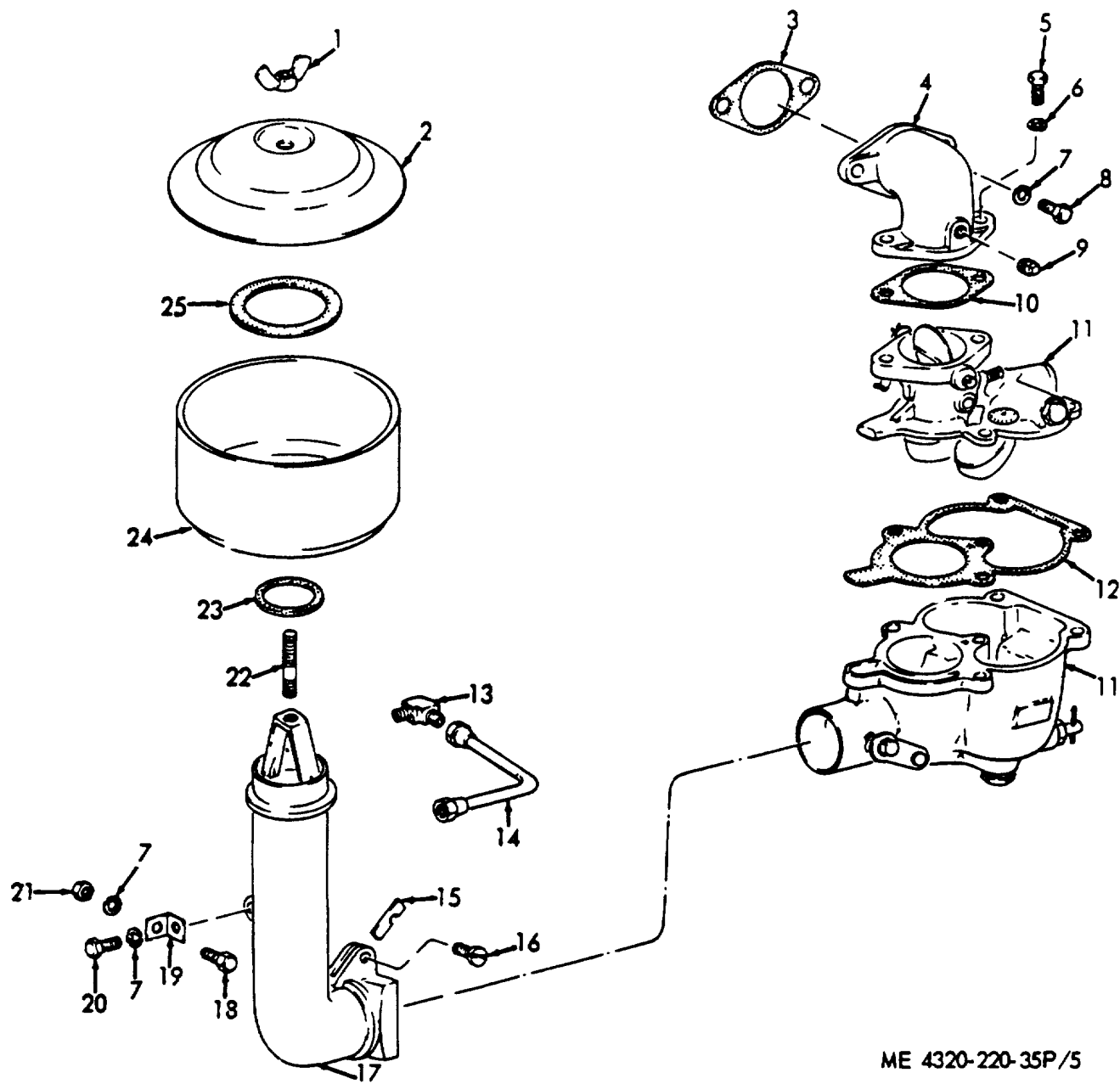


ME 4320-220-35P/4

Figure 4. Oil Pump

INDEX TO PARTS, FIGURE 4

Reference Number	Functional Group	Item Name	Reference Number	Functional Group	Item Name
1	0106	BOLT	9	0106	CAP
2	0106	WASHER	10	0106	PIN
3	0106	BODY	11	0106	PLUG
4	0106	SEAT	12	0106	PLUG
5	0106	BALL	13	0106	SPRING
6	0106	RETAINER	14L	0106	PLUG
7	0106	SPRING	15	0106	STRAINER
8	0106	PLUNGER			



ME 4320-220-35P/5

Figure 5. Air Cleaner and Carburetor.

## INDEX TO PARTS, FIGURE 5

Reference Number	Functional Group	Item Name	Reference Number	Functional Group	Item Name
1	0304	NUT	13	0106	ELBOW
2	0304	CAP	14	0106	TUBE AY
3	0108	GASKET	15	0304	GASKET
4	0108	MANIFOLD	16	0304	SCREW
5	0301	BOLT	17	0304	BRACKET
6	0301	WASHER	18	0304	SCREW
7	0108	WASHER	19	0304	SUPPORT
7	0304	WASHER	20	0304	BOLT
8	0108	SCREW	21	0304	NUT
9	0108	PLUG	22	0304	STUD
10	0301	GASKET	23	0304	WASHER
11	0301	CARBURETOR	24	0304	CUP
12	0301	GASKET	25	0304	WASHER

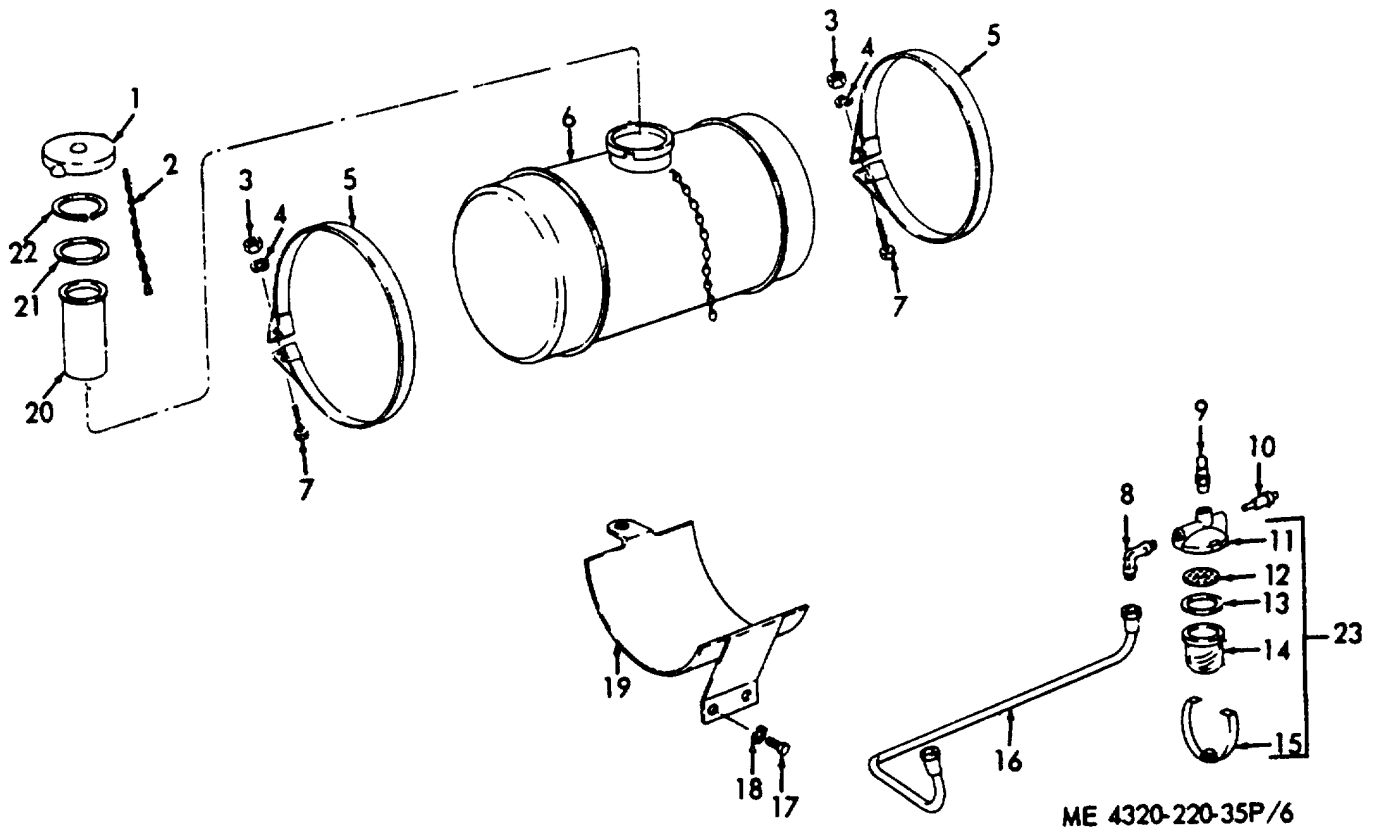
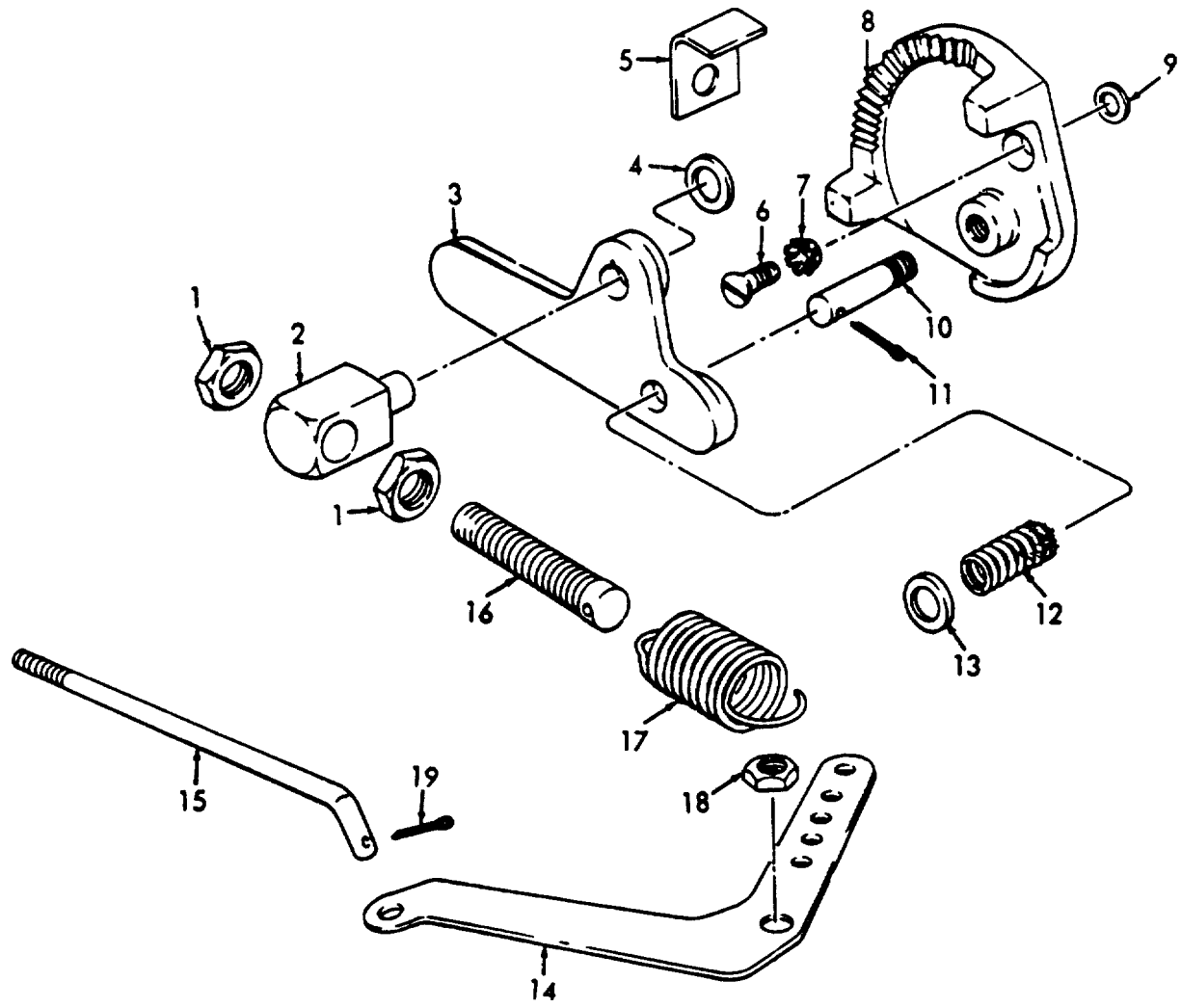


Figure 6. Fuel Tank and Strainer.

INDEX TO PARTS, FIGURE 6

Reference Number	Functional Group	Item Name	Reference Number	Functional Group	Item Name
1	0306	CAP	13	0309	WASHER
2	0306	CHAIN	14	0309	BOWL
3	0306	NUT	15	0309	BAIL
4	0306	WASHER	16	0306	TUBE AI
5	0306	STRAP	17	0306	SCREW
6	0306	TANK AY	18	0306	WASHER
7	0306	SCREW	19	0306	BRACKET
8	0306	ELBOW	20	0306	STRAINER
9	0306	STANDPIPE	21	0306	WASHER
10	0309	VALVE AY	22	0306	RING
11	0309	COVER	23	0309	STRAINER AY
12	0309	STRAINER ELEMENT			FUEL

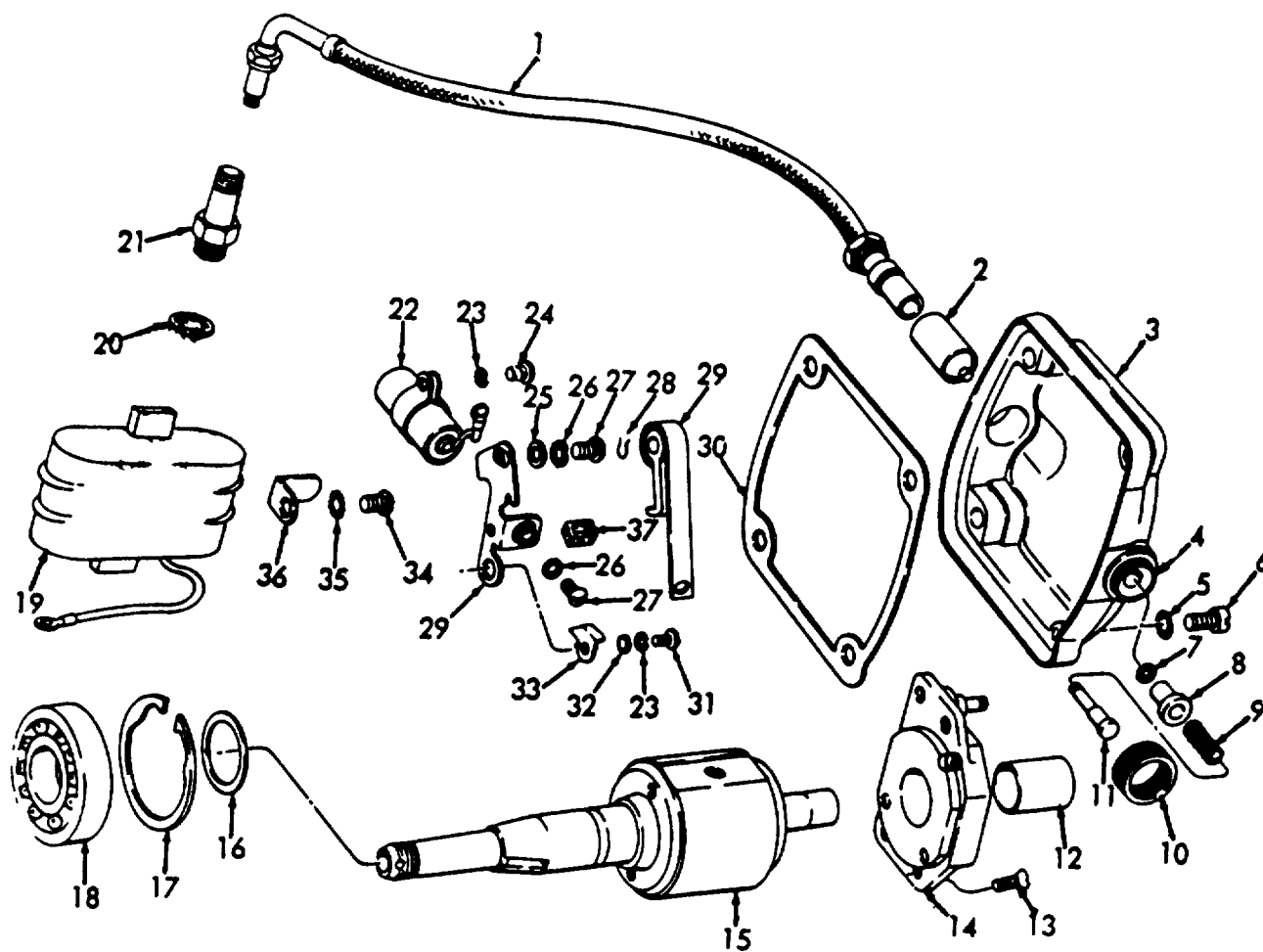


ME 4320-220-35P/7

Figure 7. Governor Controls.

INDEX TO PARTS, FIGURE 7

Reference Number	Functional Group	Item Name	Reference Number	Functional Group	Item Name
1	0308	NUT	11	0308	PIN
2	0308	BLOCK	12	0308	SPRING
3	0308	LEVER	13	0308	WASHER
4	0308	WASHER	14	0308	LEVER
5	0308	BRACE	15	0312	ROD
6	0308	SCREW	16	0308	SCREW
7	0308	WASHER	17	0308	SPRING
8	0308	BRACKET	18	0308	NUT
9	0308	GASKET	19	0312	PIN
10	0308	PIN			

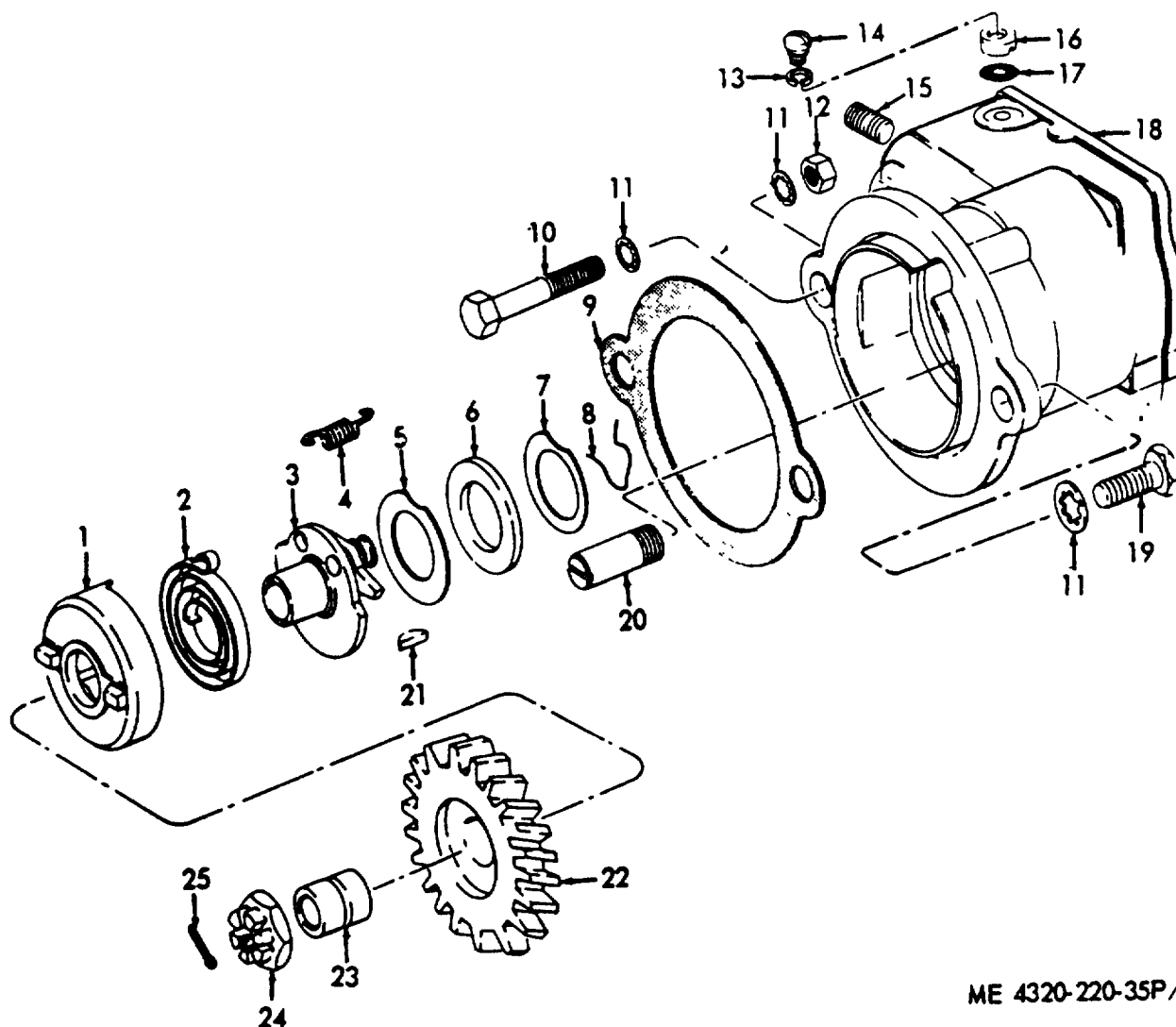


ME 4320-220-35P/8

Figure 8. Magneto, Rotor End.

INDEX TO PARTS, FIGURE 8

Reference Number	Functional Group	Item Name	Reference Number	Functional Group	Item Name
1	0605	CABLE AY	20	0605	GASKET
2	0605	INSULATOR	21	0605	SPARK
PLUG					
3	0605	CAP	22	0605	CAPACITOR
4	0605	BUSHING	23	0605	WASHER
5	0605	WASHER	24	0605	SCREW
6	0605	SCREW	25	0605	WASHER
7	0605	RING	26	0605	WASHER
8	0605	BUSHING	27	0605	SCREW
9	0605	SPRING	28	0605	RING
10	0605	NUT	29	0605	CONTACT SET
11	0605	BUTTON	30	0605	GASKET
12	0605	BEARING	31	0605	SCREW
13	0605	SCREW	32	0605	WASHER
14	0605	PLATE AY	33	0605	HOLDER AY
15	0605	ROTOR	34	0605	SCREW
16	0605	SHIM	35	0605	WASHER
17	0605	RING	36	0605	CLIP
18	0605	BEARING	37	0605	WICK
19	0605	COIL			



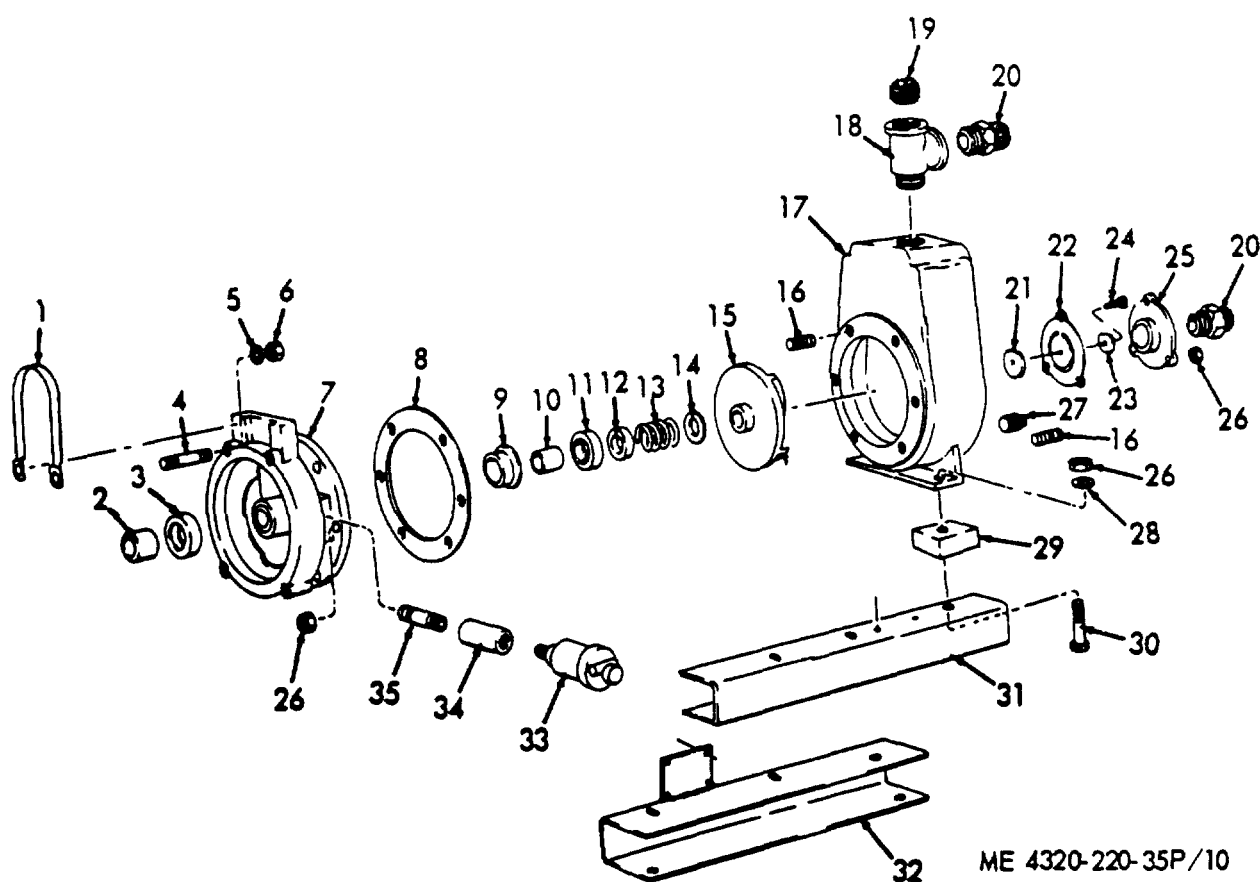
ME 4320-220-35P/9

Figure 9. Magneto, Drive End.

INDEX TO PARTS, FIGURE 9

Reference Number	Functional Group	Item Name	Reference Number	Functional Group	Item Name
1	0605	SHELLT	14	0605	SCREW
2	0605	SPRING	15	0605	SETSCREW
3	0605	HUB AY	16	0605	COVER
4	0605	SPRING	17	0605	WIRE FABRIC
5	0605	WASHER	18	0605	FRAME
6	0605	SEAL	19	0605	SCREW
7	0605	WASHER	20	0605	PIN
8	0605	RING	21	0605	KEY
9	0605	GASKET	22	0605	GEAR
10	0605	BOLT	23	0605	BEARING
11	0605	WASHER	24	0605	NUT
12	0605	NUT	25	0605	PIN
13	0605	WASHER			





ME 4320-220-35P/10

Figure 10. Compressor Pump and Base Rails.

INDEX TO PARTS, FIGURE 10

Reference Number	Functional Group	Item Name	Reference Number	Functional Group	Item Name
1	5500	HANDLE	19	5505	PLUG
2	5501	BUSHING	20	5505	ADAPTER
3	5501	SEAL	21	5505	WEIGHT
4	5500	STUD	22	5505	GASKET
5	5500	WASHER	23	5505	WEIGHT
6	5500	NUT	24	5505	SCREW
7	5500	HEAD	25	5505	FLANGE
8	5501	GASKET	26	5500	NUT
9	5501	RING	26	5505	NUT
10	5501	BUSHING	27	5500	PLUG
11	5501	RETAINER	28	5500	WASHER
12	5501	WASHER	29	5500	SPACER
13	5501	SPRING	30	5500	SCREW
14	5501	WASHER	31	1501	RAIL
15	5501	IMPELLTER	32	1501	RAIL
16	5500	STUD	33	5508	CUP
17	5500	HOUSING	34	5508	COUPLING
18	5505	TEE	35	5508	NIPPLE

**SECTION IV. INDEX FEDERAL STOCK NUMBER AND REFERENCE NUMBER  
CROSS-REFERENCE TO INDEX NUMBER**

<u>STOCK NUMBER</u>	<u>INDEX NUMBER</u>	<u>STOCK NUMBER</u>	<u>INDEX NUMBER</u>
2805-146-6694	00046	2805-695-2186	00129
2805-146-6694	00049	2805-695-8784	00015
2805-146-6694	00067	2805-695-8784	00029
2805-147-3739	00133	2805-695-8784	00109
2805-249-9905	00063	2805-705-7796	00040
2805-249-9905	00110	2805-741-0243	00140
2805-251-3219	00011	2805-776-8151	00026
2805-251-3219	00151	2805-776-8151	00116
2805-277-2918	00030	2805-776-8153	00034
2805-277-2918	00112	2805-776-8153	00118
2805-301-2940	00031	2805-921-4948	00093
2805-301-2940	00114	2910-099-5639	00239
2805-310-7667	00255	2910-358-5327	00243
28'5-310-7668	00257	2910-366-6289	00205
2805-339-5598	00111	2910-271-4613	00198
2805-353-5844	00122	2910-447-9260	00005
2805-353-5854	00042	2910-447-9260	00177
2805-353-5855	00047	2910-654-3498	00159
2805-353-5859	00186	2910-740-3354	00189
2805-353-5875	00103	2910-807-7153	00161
2805-353-5904	00009	2910-830-5496	00200
2805-353-5904	00135	2910-846-0943	00201
2805-353-5908	00004	2910-980-1705	00162
2805-360-8334	00024	2910-992-8627	00214
2805-360-8334	00108	2920-047-4176	00327
2805-366-6136	00069	2920-047-4530	00012
2805-366-6137	00072	2920-047-4530	00270
2805-366-6137	00075	2920-286-2712	00291
2805-366-6137	00078	2920-294-4001	00295
2805-366-6141	00044	2920-315-1970	00310
2805-366-6141	00048	2920-319-5055	00276
2805-366-6141	00065	2920-319-5058	00294
2805-366-9739	00013	2920-354-0741	00300
2805-366-9739	00038	2920-354-0750	00303
2805-371-4610	00107	2920-354-0766	00309
2805-371-4616	00262	2920-356-1221	00285
2805-374-3129	00152	2920-358-6442	00292
2805-377-4977	00258	2920-358-6719	00293
2805-446-7435	00139	2920-428-7572	00298
2805-464-3552	00098	2920-455-7098	00302
2805-464-4743	00099	2920-585-4059	00274
2805-528-5794	00084	2920-602-4263	00278
2805-536-8805	00008	2920-654-3499	00290
2805-536-8805	00037	2920-675-0548	00269
2805-546-3730	00006	2920-691-7884	00304
2805-546-3730	00036	2920-708-3516	00272
2805-555-6090	00088	2920-714-5868	00332
2805-562-9957	00074	2920-714-5869	00301
2805-562-9958	00077	2920-740-6251	00326
2805-585-4125	00081	2920-804-0162	00271
2805-601-9918	00123	2920-806-0637	00296
2805-604-8225	00017	2920-922-2174	00336
2805-604-8226	00058	2920-939-9835	00297
2805-620-0156	00032	2940-047-4495	00175
2805-620-0156	00115	2940-141-9296	00169
2805-625-9292	00105	2940-315-1916	00183
2805-654-3471	00071	2940-464-3772	00143
2805-654-3471	00073	2940-601-9919	00142
2805-664-7876	00033	2940-830-0150	00170
2805-664-7876	00117	2990-224-8188	00236

**SECTION IV. INDEX-FEDERAL STOCK NUMBER AND REFERENCE NUMBER  
CROSS-REFERENCE TO INDEX NUMBER (Continued)**

<u>STOCK NUMBER</u>	<u>INDEX NUMBER</u>	<u>STOCK NUMBER</u>	<u>INDEX NUMBER</u>
2990-353-5943	00237	5305-103-2684	00314
2990-353-5950	00235	5305-206-1071	00335
2990-376-0386	00212	5305-225-3839	00154
2990-536-2962	00216	5305-253-5614	00348
2990-603-4790	00248	5305-269-3211	00052
2990-618-6556	00148	5305-269-3211	00188
2990-625-9303	00147	5305-269-3213	00051
2990-677-1771	00230	5305-269-3219	00003
2990-677-2375	00251	5305-272-5306	00312
2990-874-3232	00213	5305-281-6387	00282
3110-100-0516	00043	5305-285-5282	00317
3110-100-0516	00061	5305-614-0245	00283
3110-100-3145	00060	5305-616-013	00311
3110-100-6153	00121	5305-647-2056	00320
3110-100-6153	00124	5305-647-2059	00322
3110-100-6153	00414	5305-723-9380	00323
3110-144-8998	00273	5305-808-9977	00178
3120-353-5942	00210	5305-954-5207	00349
3120-375-4611	00094	5305-958-5245	00228
4010-186-9388	00203	5305-958-5473	00321
4010-186-9388	00408	5305-984-4982	00315
4210-555-8837	00405	5305-988-1721	00261
4320-032-2798	00359	5305-988-1723	00260
4320-032-2798	00375	5306-207-6474	00158
4320-032-2799	00358	5306-207-6501	00021
4320-032-2799	00374	5306-207-9152	00174
4320-147-0292	00380	5306-207-9156	00020
4320-257-2272	00383	5306-225-85C4	00023
4320-271-7390	00361	5306-225-8504	00102
4320-271-7390	00385	5306-272-3742	00268
4320-353-0589	00379	5306-292-5785	00132
4320-353-0590	00378	5306-299-2393	00131
4320-353-0599	00366	5306-299-2393	00211
4320-353-600	00390	5306-514-8458	00095
4320-353-0601	00360	5306-938-4416	00101
4320-353-0601	00395	5307-275-3755	00053
4320-353-0602	00394	5307-275-3759	00182
4320-452-8809	00376	5307-360-0579	00367
4320-594-9715	00357	5310-012-0377	00355
4320-594-9716	00377	5310-C2-0377	00356
4510-919-2660	00398	5310-012-0377	00391
4710-277-5525	00207	5310-013-1044	00313
4710-277-5525	00411	5310-013-1044	00331
4710-277-7581	00191	5310-013-4551	00179
4710-277-7581	00410	5310-O13-4551	00196
4730-011-6452	00206	5310-188-7848	00096
4730-018-9566	00128	5310-188-7848	00333
4730-18-9566	00153	5310-194-0021	00056
47304-2-8988	00127	5310-194-0021	00208
4730-0L5-9769	00137	5310-194-9211	00229
4730-231-5632	00187	5310-205-7981	00287
4730-249-9721	00190	5310-205-9981	00035
4730-2546228	00134	5310-205-9981	00119
4730-277-3390	<b>00401</b>	5310-209-0788	00316
4730-27765	00388	5310-264-4040	00097
4730-277-6845	00389	5310-270-2172	00329
4730-366-6256	00050	5310-285-1591	00288
4730-812-4303	00194	5310-353-O576	00362
5305-012-1832	00318	5310-353-0576	00386
5305-0680500	00181	5310-366-6163	00180

**SECTION IV. INDEX-FEDERAL STOCK NUMBER AND REFERENCE NUMBER  
CROSS-REFERENCE TO INDEX NUMBER (Continued)**

<u>STOCK NUMBER</u>	<u>INDEX NUMBER</u>	<u>STOCK NUMBER</u>	<u>INDEX NUMBER</u>
5310-407-9566	00055	5315-842-3044	OC334
5310-407-9566	00167	5330-141-3389	00382
5310-407-9566	00265	5330-147-3307	00007
5310-428-7558	00307	5330-147-3307	00160
5310-479-6859	00018	5330-176-4123	00166
5310-576-1783	00233	5330-245-5460	00172
5310-576-5752	00284	5330-251-4070	00384
5310-582-5965	00144	5330-253-2469	00173
5310-582-5965	00145	5330-285-5061	00010
5310-582-5965	00155	5330-285-5061	00231
5310-582-5965	00184	5330-291-9873	00163
5310-582-5965	00199	5330-292-1504	00014
5310-582-5965	00264	5330-292-1504	00039
5310-584-8731	000X1	5330-358-5683	00165
5310-596-6326	00256	5330-366-7148	00277
5310-637-1058	00226	5330-508-3010	0016L
5310-647-2054	00328	5330-841-2729	00225
5310-702-1797	00054	5330-841-2729	00409
5310-732-0558	00016	5340-050-1591	00028
5310-737-2632	00306	5340-143-5280	00280
5310-809-4058	00222	5340-143-6669	00080
5310-809-8544	00223	5340-147-3745	00141
5310-814-5973	00204	5340-256-7146	00130
5310-928-9824	00338	5340-256-7147	00221
5315-1L0-6749	00106	5340-562-0738	00381
5315-353-5882	00136	5340-576-5825	00286
5315-616-4492	00234	5340 699 9964	00279
5315-616-5512	00066	5340-779-5991	00263
5315-616-5514	00305	5340-816-4239	00281
5315-616-5525	00064	5340-974-9537	00193
5315-710-9252	00027	5910-60.-620A	00275
5315-n710-9252	00113	5930-358-7735	00324
5315-831-0140	00308	5975-831-0182	00325
5315-839-2325	00219	9390-292-0355	00289

<u>REFERENCE NO.</u>	<u>MFG CODE</u>	<u>INDEX NO.</u>	<u>REFERENCE NO.</u>	<u>MFG CODE</u>	<u>INDEX NO.</u>
AA91A11	66289	00025	BG241S1	66289	00042
A91A1S8	66289	00022	BG242S1	66289	00047
AB101-5S1	66289	00040	BI29131	66289	00175
AD43	66289	00027	BK85	66289	0M186
AE75D	66289	00034	BB8S	19728	00336
AE75D	66289	00118	B1291-6	66289	00176
AF54	66289	00033	B1498B	82796	00280
AF54	66289	00117	B2735A	82796	00307
AG31	66289	00031	B5969	82796	00328
AG34B	66289	00114	B6030A	82796	00301
AG34B	66289	00032	CA48D82	66289	00062
AG34B	66289	00115	CA48D82S1	66289	00058
AH9	66289	00030	CX2514C	82796	00324
AH9	66289	00112	C142-68	79960	00162
AN500-10-10	81352	00283	C1498D	82796	00279
A2347A	82796	00276	C181-329	79960	00161
A2492A	82796	00288	C2513A	82796	00327
A2492C	82796	00287	C2723	82796	00286
A2572	82796	00291	C2744	82796	00292
A5-9	19728	00337	C5949	82796	00273
A5950A	82796	00274	C5963	82796	00298
A7419	78940	00172	C6032B	82796	00332
BB128A	66289	00122	DA49A	66289	00098
BG241	66289	00045	DA49AS1	66289	00093

**SECTION IV. INDEX-FEDERAL STOCK NUMBER AND REFERENCE NUMBER  
CROSS-REFERENCE TO INDEX NUMBER (Continued)**

<u>REFERENCE NO.</u>	<u>MFG CODE</u>	<u>INDEX NO.</u>	<u>REFERENCE NO.</u>	<u>MFG CODE</u>	<u>INDEX NO.</u>
DB209-3	66289	00073	NC143	66289	00069
DB209-3-020	66289	00076	PA314-1	66289	00107
DB2093-040	66289	00079	PA340	66289	00234
DB209-3SP	66289	00071	PF132	66289	00126
D8209-3SP20	66289	00074	PG343A	66289	00183
DB209-3SP40	66289	00077	PG504	66289	00198
DE65	66289	00072	PG504S1	66289	00195
DE65	66289	00075	PG563	66289	00214
DE65	66289	00078	PH193	66289	00044
DR6D	66289	00081	PH193	66289	00048
DR6520	66289	00085	PGH93	66289	00065
R6DS40	66289	00089	PH482	66289	00204
D2480	82796	00310	PI121A	66289	00227
D2458	82796	00329	PID27A	66289	00193
D2565	82796	00300	PK50A	66289	00140
D4373	82796	00325	PK52	66289	00080
D6120	82796	00294	PL21	66289	00106
EA11OBS1	66289	00103	PL55	66289	00064
EA11OC	66289	00104	PL87	66289	00066
DFM2DE8B70	82796	00290	PM117	66289	00221
F63	66289	00111	PM165	66289	00130
GA39	66289	00063	PM58	66289	00141
CA39	66289	00110	PM74	66289	00236
GB50	66289	00105	P2474X	82796	00304
GDL22A	66289	00271	QA113	66289	00099
G2788	82796	00303	QB77	66289	00011
G3861	82796	00285	QB77	66289	00151
H201D	66289	00116	QC58	66289	00007
IF432	66289	00263	QC58	66289	00160
B133AI	66289	00094	QD484	66289	00008
HG201D	66289	00026	QD484	66289	00037
J2430O	82796	00293	QD487A	66289	00014
X6' -2	66289	00125	QD487A	66289	00039
KA64-2S1	66289	00123	QD487B	66289	00013
KF19A	66289	00133	QD487B	66289	00038
KF27B	66289	00139	QD570A	66289	00012
KF30	66289	00129	QD570A	66289	00270
KIT82796-1	81336	00272	QD571	66289	00010
12498	82796	00277	QD571	66289	00231
LC269A	66289	00152	QD612A	66289	00015
LJ158	66289	00252	QD612A	66289	00029
L2788	82796	00289	QD612A	66289	00109
ME38A	66289	00121	QD647	66289	00005
M138A	66289	00124	QD647	66289	00177
ME38A	66289	00414	QD674	66289	00006
MEB4	66289	00059	QD674	66289	00036
MS13931-1	96906	00083	QD675	66289	00009
013931-2	96906	00087	QD675	66289	00135
MS13931-3	96906	00091	Q0695	66289	00224
MS13932-1	96906	00084	Q22	66289	00004
MS13932-2	96906	00088	RCQ18	66289	00201
MS13932-3	96906	00092	RM27A	66289	00194
1813933-1	96906	00082	Rm37	66289	00142
S813933-2	96906	00086	RML280A	66289	00189
MS13933-3	96906	00090	RM494	66289	00143
M535225-25	96906	00315	tM80	66289	00205
MS35335-30	96906	00316	R2425	82796	00302
MS35756-6	96906	00305	SA68	66289	00024
M100-2	00165	00241	SA68	66289	00108
M2570	82796	00306	SD35K	66289	00346

**SECTION IV. INDEX-FEDERAL STOCK NUMBER AND REFERENCE NUMBER  
CROSS-REFERENCE TO INDEX NUMBER (Continued)**

<u>REFERENCE NO.</u>	<u>MFG CODE</u>	<u>INDEX NO.</u>	<u>REFERENCE NO.</u>	<u>MFG CODE</u>	<u>INDEX NO.</u>
SD39	66289	00046	1345	05748	00381
SD39	66289	00049	1346	05748	00380
SD39	66289	00067	1347	05748	00383
E154	66289	00262	1348	05748	00362
SE155	66289	00255	1348	05748	00386
SE157	66289	00258	1349	05748	00361
SE158	66289	00257	1349	05748	00385
SV2563C20	82796	00296	1350	05748	00384
SXM33X	82796	00275	14130	60038	00060
SZ2563	82796	00297	14276	60038	00043
S2477C	82796	00295	1L426	60038	00061
S2514	82796	00326	1508	05748	00397
S2568	82796	00308	1684	05748	00401
TC301-3	66289	00216	1690	05748	00376
TC322D1	66289	00230	1699	05748	00359
TC323A	66289	00210	1699	05748	00375
TC324D	66289	00237	1700	05748	00358
TC325	66289	00212	1700	05748	00374
TC432B	66289	00232	176E1	78940	00171
TC433	66289	00235	17981	78940	00170
TT74D	66289	00213	18268	05748	00341
T12B1	78940	00169	18269	05748	00342
T1498	82796	00278	18270	05748	00369
T56-20	79960	00164	18502SA	05748	00377
T56-23	79960	00166	18507	05748	00345
T56-24	79960	00165	18839S3	05748	00364
T56-48	79960	00163	18840SA	05748	00365
U222	66289	00147	189294	66289	00017
U268	66289	00148	1962	05748	00379
VB179A	66289	00218	1977	05748	00378
V035	66289	00217	2238	05748	00368
V A304C	66289	00248	2429	05748	00370
VS584A	66289	00215	25SS	82796	00323
V1498	82796	00281	2503	05748	00354
V4631	82796	00309	2604	05748	00372
WD66B	66289	00251	2606	05748	00371
WE306A	66289	00200	2847	05748	00396
WE306GS1	66289	00192	3060	05748	00366
XA88	66289	00197	3063	05748	00390
XB78	66289	00259	3064	05748	00360
X4	66289	00138	3064	05748	00395
X132	66289	00247	3065SA	05748	00394
YD1.76C	66289	00269	3207	05748	00363
ZX5957	82796	00299	3208	05748	00392
10610D	82796	00282	3226	05748	00000
100-101	00165	00245	3261	05748	00402
100-11	0165	00243	3438	05748	00393
100-2	00165	00242	5639	05748	00347
100-6-7-9	00165	00244	6SW	82796	00314
100A	00165	00240	6S51	82796	00322
11617	05748	00353	6S6U	82796	00311
121841	00000	00319	60388	79150	00382
121941	00000	00330	615AI	78940	00173
12199A	79960	00149	8S4U	82796	00320
12713	05748	00352	8S6C	82796	00321
13104A	00000	00313	8S6N	82796	00318
131044	00000	00331	8S6U	82796	00317
1339	05748	00398	830	00165	00239

By Order of the Secretary of the Army:

W. C. WESTMORELAND,  
*General, United States Army,*  
*Chief of Staff.*

Official:

KENNETH G. WICKHAM,  
*Major General, United States Army,*  
*The Adjutant General.*

Distribution:

To be distributed in accordance with DA Form 12-25, Section I, (qty rqr block No. 243) Direct and General Support maintenance requirements for Pumps, Centrifugal: Fresh Water.

**TM 5-4320-220-35P PUMP, CENTRIFUGAL: GASOLINE DRIVEN, BASE MOUNTED - 1969**



RECOMMENDED CHANGES TO EQUIPMENT TECHNICAL PUBLICATIONS



THEN... JOT DOWN THE DOPE ABOUT IT ON THIS FORM, CAREFULLY TEAR IT OUT, FOLD IT AND DROP IT IN THE MAIL!

**SOMETHING WRONG WITH THIS PUBLICATION?**

FROM: (PRINT YOUR UNIT'S COMPLETE ADDRESS)

DATE SENT

PUBLICATION NUMBER

PUBLICATION DATE

PUBLICATION TITLE

BE EXACT... PIN-POINT WHERE IT IS

IN THIS SPACE TELL WHAT IS WRONG AND WHAT SHOULD BE DONE ABOUT IT:

PAGE NO.	PARA-GRAPH	FIGURE NO.	TABLE NO.
----------	------------	------------	-----------

TEAR ALONG PERFORATED LINE

PRINTED NAME, GRADE OR TITLE, AND TELEPHONE NUMBER

SIGN HERE:

DA FORM 2028-2 JUL 79

PREVIOUS EDITIONS ARE OBSOLETE.

P.S.—IF YOUR OUTFIT WANTS TO KNOW ABOUT YOUR RECOMMENDATION MAKE A CARBON COPY OF THIS AND GIVE IT TO YOUR HEADQUARTERS.

**PIN: 008454-000**